



Degree Works
Advanced Reporting
Technical Guide
Release 5.0.3
December 2019

Notices

© 1999-2019 Ellucian.

Contains confidential and proprietary information of Ellucian and its subsidiaries. Use of these materials is limited to Ellucian licensees, and is subject to the terms and conditions of one or more written license agreements between Ellucian and the licensee in question.

In preparing and providing this publication, Ellucian is not rendering legal, accounting, or other similar professional services. Ellucian makes no claims that an institution's use of this publication or the software for which it is provided will guarantee compliance with applicable federal or state laws, rules, or regulations. Each organization should seek legal, accounting, and other similar professional services from competent providers of the organization's own choosing.

Ellucian's Privacy Statement is available at: www.ellucian.com/privacy.

Ellucian shall have the right to (a) use, store, process, modify, reproduce, distribute and display customer data, and to grant sublicenses to third parties, for the sole purposes of providing the software, performing Ellucian's obligations under its agreements with customers and complying with applicable law or legal requirements; (b) use, store, process, modify and reproduce customer data for Ellucian's internal business purposes, including development, diagnostic, forecasting, planning, analysis and corrective purposes in connection with the software, and for otherwise improving and enhancing the software; and (c) use, store, process, modify, reproduce, display, perform, distribute, disclose and otherwise exploit in any manner Aggregated Data for Ellucian's business purposes, including disclosure within its public statements and marketing materials describing or promoting Ellucian or the software. "Aggregated Data" means any data obtained or generated by Ellucian, including data pertaining to the software, Ellucian's systems and software, and the use of any of the foregoing, and includes data derived from customer data, which in all instances (i) does not identify any individual and (ii) is not attributed or attributable to a specific customer. Aggregated Data includes data that has been combined into databases which include third party data.

Ellucian
2003 Edmund Halley Drive
Reston, VA 20191
United States of America

Contents

Notices	1
Introduction to Advanced Reporting.....	6
Curriculum Planning Assistant (CPA) – User Considerations.....	6
Overview	6
School and Degree.....	6
Selecting Current Students by Term.....	6
CPA – Technical Considerations	8
MAYTAKE vs MUSTTAKE vs CANTTAKE	9
Running new audits.....	10
Creating Results from Audits using DAP22.....	12
Dynamic Results Generation using restart	13
Numeric fields	15
DAP16 LABELS	15
Database Space Needed.....	16
Rule ID.....	17
Database layout – CPA tables	18
UCX-CFG020 RESULTS	20
Result Types.....	20
Result Types: ACADEMIC AUDIT DATA	22

Result Types: FINANCIAL AID AUDIT DATA.....	44
Node Types.....	47
Classic Student Educational Planner (SEP).....	49
Database layout – SEP tables.....	49
Relationships.....	51
Timetabling.....	52
Overview.....	52
Setup.....	52
Reporting on the Results.....	53
Student Educational Planner.....	54
Plan Structure.....	56
Plan Data Structures.....	59
Plan Data Definitions.....	59
Plan Entity Relation Diagram.....	72
Template Data Structures.....	73
Template Data Definitions.....	74
Template Entity Relation Diagram.....	86
Requirements.....	88
Exceptions.....	91
DAP_EXCEPT_DTL.....	91

Notes 95

DAP_NOTE_DTL.....	95
DAP_NOTE_TXT_DTL.....	96

Introduction to Advanced Reporting

Degree Works can provide detailed guidance to the Registrar and to an institution's research staff through reports the institution writes that access Degree Works database tables. There are multiple data storehouses in Degree Works, including the Curriculum Planning Assistant (CPA), which contains registration history and student advice and the Student Educational Planner (SEP) where students and advisors work out the student's future plans to take classes. Scribe requirement blocks, exceptions, notes and other data are also available for reporting.

Degree Works stores the actual audit in a proprietary format that is not easily accessed by standard tools. The CPA unloads the audit data into a format accessible with SQL reporting tools.

Curriculum Planning Assistant (CPA) – User Considerations

Overview

The CPA and its data storehouse moves the academic advising process far beyond individual students, the campus Web site, and campus advising centers. This information makes advising a central component of enrollment management, placing it at the very heart of institutional planning and resource allocation. The CPA makes substantive academic planning a reality because these data are comprehensive, term-specific, and gathered from every college, school, division, and academic department within the institution.

School and Degree

The Degree Works CPA data is built by running batch audits and specifying you want to also build the CPA results records. Before a new set of records are saved for a student the current set of CPA results are first deleted. However, since an institution may want to keep results for multiple degrees for a student, either simultaneous or consecutive, we only delete the CPA results for the school and degree against which the audit was run. In doing this, a student could have two sets of CPA results in the database: one for his BA in Art History degree and one for his MBA degree.

Selecting Current Students by Term

When CPA results are built they are added to the database on a student by student basis. Old CPA results data for that particular student for the same school and degree are deleted before the new records are added. However, when CPA results are built the pool of students are usually your currently enrolled students. Those students that have graduated, transferred or taken time off will most likely not be in your pool of current students - but the CPA results data for these

students from the previous term will most likely still be in the Degree Works database. Some reports help look for trends on what classes are generally used to satisfy certain requirements or what classes have a high failing rate; keeping historic CPA results data can help provide valuable information to your institution's administrators.

Because historic CPA data can be housed along with current students' CPA results many of the reports prompt for a term. This term value represents the last term they attended your institution - with the assumption that an audit was run for them and CPA results were built. By using the default of * all current and historic CPA records will be queried. You may instead choose to type in the current term value or choose it from the "... " lookup.

CPA – Technical Considerations

The Curriculum Planning Assistant (CPA) tool places audit results in the database in a format that may be queried using standard SQL-based reporting tools.

The audit results are placed in the **dap_result_dtl** table with class records being stored in the **dap_resclass_dtl** and noncourse records being stored in **dap_resnoncr_dtl** table.

Some information is not stored in the result tables since the information already exists in other tables. Some of this information includes:

- Level – take from `dap_audit_dtl`
- Name – take from the `rad_primary_mst`
- Notes – take from `dap_note_dtl` and `dap_note_txt_dtl`
- Exceptions – take from `dap_except_dtl`

The three result tables may contain Academic Audits, Financial Aid Audits, Athletic Eligibility Audits, and Planner Timetabling Audits. For any given student there might be one set of records for one type of audit and another for the other type of audit. The different sets of records are distinguished using the `dap_audit_type` – it is set to AA (Academic Audit), FA (Financial Aid Audit), AE (Athletic Eligibility Audit), or PL (Planner Audit).

The results tables will contain only the latest audit for each student for these values:

- Student ID
- Audit type
- School
- Degree
- Term

If a student has two degrees on the curriculum, the student may have two sets of CPA records for the same term. For students with just a single degree on their curricula, you should expect to see a set of CPA records for each term for which an audit was generated. The term field is based on the student's active term, which is the same term on the `rad_student_mst`. You can choose to delete historic CPA records or use them for your special reporting needs. It is important to remember that when reporting on the CPA tables you must be sure to include the term code to ensure your selection is correct. Also be sure to always query on the appropriate audit type – which is usually AA for Academic Audits.

MAYTAKE vs MUSTTAKE vs CANTTAKE

Classes listed as options are reported in the database as MAYTAKE while classes listed in “plus” lists or as part of an “including” list are marked at MUSTTAKE. Classes that cannot be used to satisfy a rule are coded with CANTTAKE.

The classes listed in these rules will be marked as **MUSTTAKE**:

Rule	Reason
1 Class in Math 123	Only class listed
5 Credits in Math 123	Only class listed
2 Classes in Math 123 + 124	Part of a + list
2 Classes in Math 123, 124	Number of classes specified
10 Credits in Math 123 + 124	Part of a + list
15 Credits in Math @ Including Math 123	Part of the Including list

The classes listed in these rules will be marked as **MAYTAKE**:

Rule	Reason
1 Class in Math 123, 124	Only 1 class is needed but multiple classes are listed
10 Credits in Math 123, 124	Credits are specified – possibly could take one class to satisfy the requirement
1 group in (1 Class in math 123) or (1 Class in math 124)	Part of a group rule

The classes listed in the Except list of these rules will be marked as **CANTTAKE**:

Rule	Reason
10 Credits in Math 12@ Except Math 128	Math 128 cannot be used to satisfy this rule.

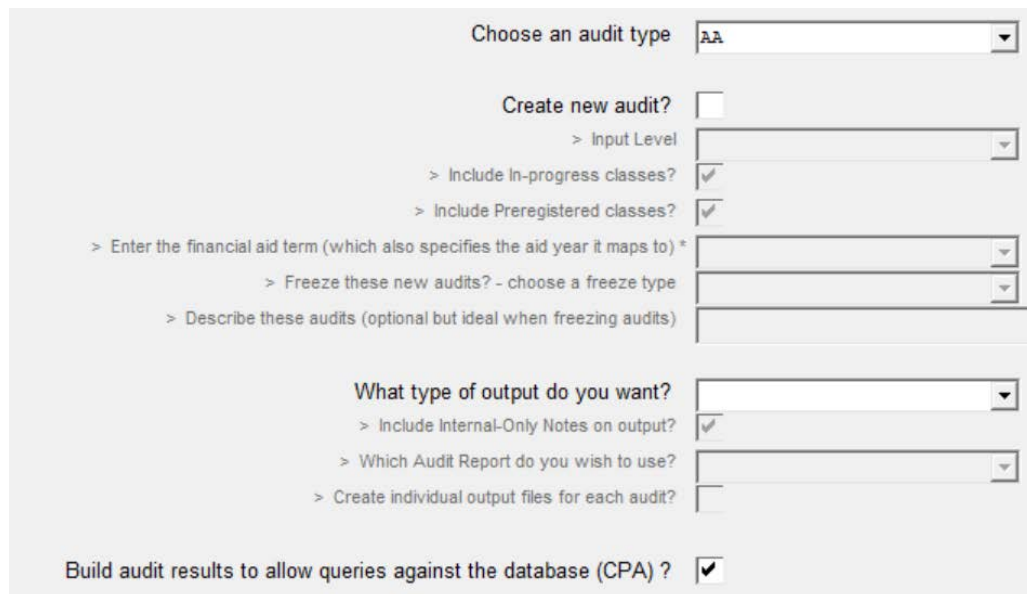
Running new audits

Whenever a new audit is run the **dap_what** field on the **dap_audit_dtl** is set to **NEW**. Audits created because new student data was bridged through the extract, audits created when running DAP22 via Transit, and audits created by web users will be marked as “NEW” in the database.

Audit results can be dynamically created from NEW audits using the **dapresjob**. This job searches for newly created audits and creates the audit results records. This process is run as a low level background process and thus only uses the CPU when it is not in use and should not affect system performance significantly. The job can be started and stopped at anytime but normally would run all day long watching for any new audits. It might be a good idea, however, to shut this job down while your nightly extract is run and then start it up again when it is finished. You might consider setting up your cron job to run resstop before running your extract and issue the resstart after your extract finishes.

Another way to generate audits results is to use **DAP22** in **Transit** and select the **Build audit results** option under the *Questions* tab. New audits may be created to feed the audit results by selecting **Create new audit**. If new audits are not created the most recent audit for each student will be used to build the audit results. Be sure to choose the correct Audit Type when building results – you can choose either Academic Audit or Financial Aid Audit. The set of students is based on those students chosen in your **Selection** tab in Transit. Please note that when a student is selected results will be built for all of her most recent degree audits: if she has two degrees on her curriculum she will get two sets of results generated.

The following figure shows the checkbox in DAP22 in Transit that can be used to generate results:



The screenshot shows a web form for configuring audit results. At the top, there is a dropdown menu for 'Choose an audit type' with 'AA' selected. Below this is a section titled 'Create new audit?' with a checkbox that is currently unchecked. Underneath are several expandable options: '> Input Level' (dropdown), '> Include In-progress classes?' (checkbox checked), '> Include Preregistered classes?' (checkbox checked), '> Enter the financial aid term (which also specifies the aid year it maps to) *' (dropdown), '> Freeze these new audits? - choose a freeze type' (dropdown), and '> Describe these audits (optional but ideal when freezing audits)' (text input). A second section is titled 'What type of output do you want?' with a dropdown menu. Below it are three expandable options: '> Include Internal-Only Notes on output?' (checkbox checked), '> Which Audit Report do you wish to use?' (dropdown), and '> Create individual output files for each audit?' (checkbox). At the bottom of the form, the option 'Build audit results to allow queries against the database (CPA) ?' is checked.

DAP22 is designed not to build audit results for a particular audit if the audit results were already built and still exist in the **dap_result_dtl**. You can override this behavior by running the following command, and then issuing a **daprestart**:

```
$ export DAP32_FORCE_RESULTS=1
```

With this flag set, the existing records for the audit are removed and new records for the audit are built. This may be useful if you change any of the UCX-CFG020 RESULTS flags or if new software is delivered that fixes a problem with the results records. In most situations, however, you should not need to set this flag.

These settings control whether results are built for audits generated after the **bannerextract** or **colleagueextract** or **RAD30JOB** is run and whether in-progress and preregistered classes are included in the audit:

```
integration.bridge.audits.buildCpaResults
integration.bridge.audits.includeInProgress
integration.bridge.audits.includePreregistered
```

Change the *buildCpaResults* flag to true so that results will be generated for every audit launched by the extract/bridge.

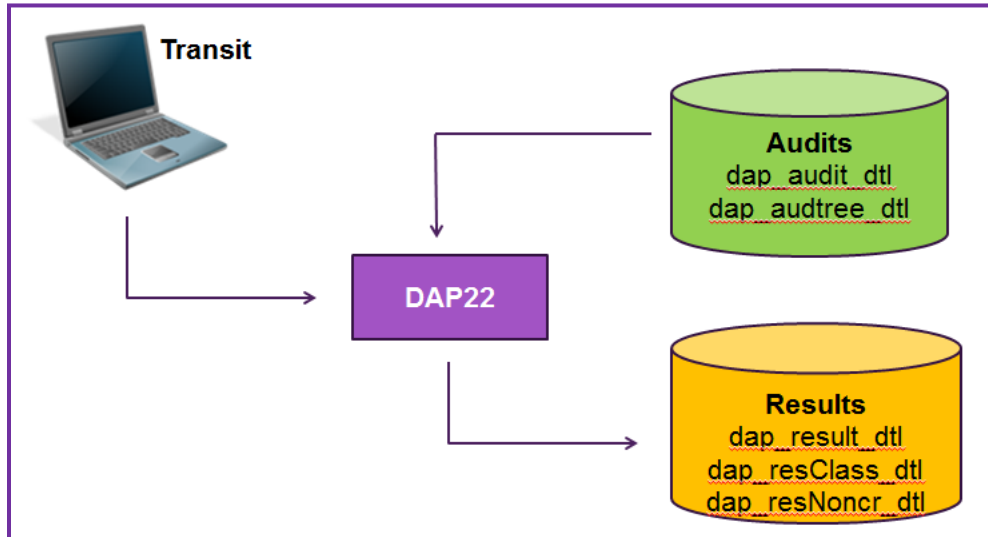
You should not use both DAP22 and dapresjob since they both serve the same purpose. You may, however, want to generate new audits for your students and build results. If you do this, be sure to do a resstop to terminate the daemon process so it does not interfere with your running of DAP22.

However, if you set the *buildCpaResults* flag you will find that only those audits created from the extract get turned into CPA records. The audits that are run during the day (perhaps because of the UCX-CFG020 REFRESH flags) will not have CPA data generated. For this reason it is imperative that you do a resstart to have the dynamic processor running to catch newly created audits. You do not, however, want this running when you are running the extract/bridge. In cron you will want to do something like this regardless of whether you have that *buildCpaResults* flag set. It is best to wait until the extract has run and all audits are finished to have the dynamic processor create the CPA data:

```
resstop
bannerextract student
resstart
```

Creating Results from Audits using DAP22

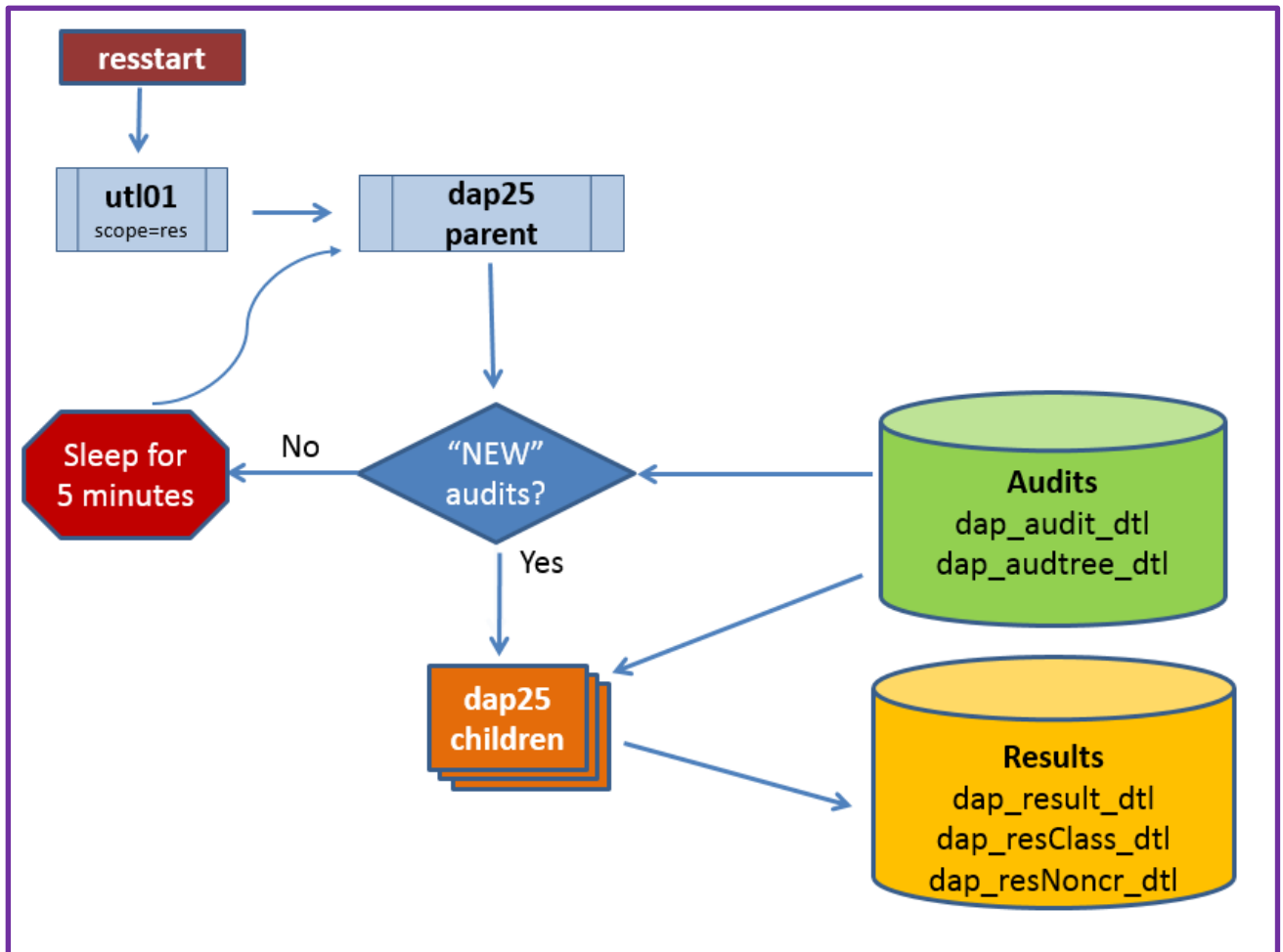
The following diagram shows how DAP22 reads the audits and generates results:



Dynamic Results Generation using restart

As it can take a while to build the results from an audit and since schools may want to always have the most up-to-date results information, dynamic generation of audit results is also an option. Results built this way, however, are only done so based on Academic Audits.

1. When a new audit is run it is saved with `dap_what` set to "NEW" on the `dap_audit_dtl`.
2. The **restart** script is run to start the daemon/listener to dynamically generate audit results.
3. The **parent dap25 process** will wake up every `$DAP25_SLEEP_SECONDS` (see `dwenv.config`) to check for new audits querying for a max of `$DAP25_NEW_AUDIT_MAX` (see `dwenv.config`) `dap_audit_dtl` records with a `dap_what = 'NEW'`.
4. The parent `dap25` process will spawn a sufficient number (see `$DAP25_AUDITS_PER_CHILD` in `dwenv.config`) of **dap25 child** processes to process the new audits.
5. The `dap_what` on the `dap_audit_dtl` is set to "RESULTS" so it is no longer considered "NEW".



Scripts/commands

- **resstart** – starts dap25 daemon
- **resshow** – show dap25 parent and children
- **resstop** – stops dap25
- **dap25** – reads a the dap_audit_dtl looking for new audits
- **dapreslook** – tool to show the results records built for a given student

You should do a **resstop** and a new **resstart** at least once a week to limit the size of the dap25.log file created in the logdebug directory.

Even if you did not run restart, you can still run resshow to display the number of NEW academic audits in the dap_audit_dtl along with the number of academic audits currently in the dap_result_dtl. When running **resshow** simply supply the “counts” parameter:

```
$ resshow counts
OWNER  PID  PPID  STARTED  CPUTIME  COMMAND
=====
The number of NEW academic audits waiting to be processed into CPA results =          75
The number of academic audits now in the CPA results table =          4692
```

After running **resstart** and run **resshow** without (or with) the “counts” parameter you will most likely just see the utl01 process along with the parent dap25. (The utl01 process is there to monitor dap25 in case it dies; a new dap25 will be restarted if it dies.)

```
$ resshow
OWNER  PID  PPID  STARTED  CPUTIME  COMMAND
=====
dwadmin 22539    1 Apr14    00:00:00 utl01x db=dwprod@ scope=res
dwadmin 22542 22539 Apr14    00:00:00 dap25x db=dwprod@
```

This **parent dap25** sleeps most of the time but when it wakes up it queries the db to check for NEW audits. Only when there are NEW audits to run will the parent dap25 spawn off a list of child dap25 processes will you see those child processes appear in the **resshow** display. Once the results have been built each **dap25** child will die.

Numeric fields

Record types containing numbers in the Value1-4 fields will also have the corresponding value stored in the Number1-4 fields but as an actual database numeric value.

The Number fields get loaded with real values for these result types:

- BLOCKGPA
- BLOCKCRCLAPPLIED
- BLOCKCRCLNEEDED
- LABEL
- CRCLNEEDED
- NONCRNUMNEED
- FALLCRCL
- OTLCRCL
- INSUFFCRCL

For the other result types, the Number fields contain 0.0.

DAP16 LABELS

To help some CPA reporting we store each of the labels in each of the blocks in the `dap_result_dtl`. When a block is saved to the database the parser saves each label found in the block along with its `rule_ID` to the `result_dtl`. The `result_dtl` `stu_id` and `req_id` fields are loaded with the block's RA number. A dummy `dap_student_mst` is created for the block with the `stu_id` field as its RA number – this is done for data integrity.

Before trying to use the CPA reports for the first time after installation you may need to run DAP16 to build the `result_dtl` records for each of the blocks.

Database Space Needed

Dap-result-dtl - 262 bytes

Approximately 500 records per student – depends on student level, on requirements and on UCX-CFG020 RESULTS flags.

For one student: 500 records x 262 bytes = 131,000 bytes

Dap-resclass-dtl - 184 bytes

Freshman may have less than 20 each while seniors may have 30-50 classes each.

For one student: 25 records x 184 bytes = 4,600

Dap-resnoncr-dtl – 110 bytes

The number of UCX-SCR003 data items defined determines how many of these will be built per student.

For one student: 5 records x 110 bytes = 550 bytes

Approximate Total: 131K + 4.6K + .5K = **136K per student**

Dap-result-dtl records are also built for each of the labels in your blocks.

If you have 200 blocks using an average of 8 labels per block you will get 1,600 additional result-dtl records. This is an extra 416K bytes - but is a fixed number that will not change as your student population changes.

Rule ID

Each rule in a block has a unique rule-ID and it is used to help identify each rule in the dap-result-dtl. The first rule has an ID of “1”, the second rule – “2” and so on. When rules appear within groups or subset or if-statements additional ID information is added allowing us to keep track of the hierarchy. As the rules get deeper each level, a hyphen and number is added to represent the relationship to the parent rule.

Rule ID	Rule
1	5 Credits in math 105 Label “Intro to Algebra”
2	5 Credits in math 112 Label “Algebra II”
3-0	Beginsub 5 Credits in HIST 124 Label “European History”;
3-1	5 Credits in HIST 125 Label “American History”;
3-2	5 Credits in HIST 126 Label “Current History”;
3	EndSub Label “History requirement”;
4-0	1 group in (6 credits in CHEM 104, 105 Label "Chemistry for non science majors") or
4-1	(6 credits in CHEM 114, 115 Label "chemistry for science majors")
4	Label "Chemistry requirement";

However, if the rule-id is greater than 20 characters the rule’s node-id will be used instead.

Database layout – CPA tables

DAP_RESULT_DTL

This table contains the results of an audit. Each degree audit that is created has many entries representing the different types of data contained within an audit. Each set of audit records is grouped by the first five fields as shown below.

Name	Null?	Type
DAP_STU_ID	NOT NULL	CHAR(10)
DAP_AUDIT_TYPE		CHAR(2)
DAP_SCHOOL		CHAR(12)
DAP_DEGREE		CHAR(12)
DAP_ACTIVE_TERM		CHAR(8)
DAP_BLOCK_SEQ_NUM		NUMBER(2)
DAP_RESULT_SEQ_NUM		NUMBER(6)
DAP_REQ_ID		CHAR(8)
DAP_RULE_ID		CHAR(20)
DAP_NODE_TYPE		NUMBER(4)
DAP_RESULT_TYPE		CHAR(20)
DAP_VALUE1		CHAR(12)
DAP_VALUE2		CHAR(12)
DAP_VALUE3		CHAR(12)
DAP_VALUE4		CHAR(12)
DAP_NUMBER1		NUMBER(8,3)
DAP_NUMBER2		NUMBER(8,3)
DAP_NUMBER3		NUMBER(8,3)
DAP_NUMBER4		NUMBER(8,3)
DAP_FREETEXT		CHAR(80)
DAP_CREATE_DATE		DATE
UNIQUE_ID	NOT NULL	NUMBER(10)
UNIQUE_KEY	NOT NULL	CHAR(36)

DAP_RESNONCR_DTL

The records here represent the noncourses a student has completed that were used in the degree audit. As with the dap_result_dtl, each set of records is grouped by the first five fields as shown below.

Name	Null?	Type
DAP_STU_ID	NOT NULL	CHAR(10)
DAP_AUDIT_TYPE		CHAR(2)
DAP_SCHOOL		CHAR(12)
DAP_DEGREE		CHAR(12)
DAP_ACTIVE_TERM		CHAR(8)
DAP_CLASS_ID		CHAR(6)
DAP_NONCRS_TYPE		CHAR(12)
DAP_NONCRS_VALUE		CHAR(12)
DAP_COURSE_TITLE		CHAR(50)
DAP_TERM		CHAR(8)
DAP_CREATE_DATE		DATE
UNIQUE_ID	NOT NULL	NUMBER(10)

UNIQUE_KEY	NOT NULL CHAR(36)
------------	-------------------

DAP_RESCLASS_DTL

The records here represent the classes a student has taken (or will take) that were used in the degree audit. As with the dap_result_dtl, each set of records is grouped by the first five fields as shown below.

Please note that the dap_fallthrough field below does not signify that the class ended up in the fall-through section. This flag simply records that the class was bridged with the force-fallthrough flag set on the rad_class_dtl record when it was bridged. In the same manner the passfail, incomplete and insufficient flags also record how the class was bridged to Degree Works.

Name	Null?	Type
DAP_STU_ID	NOT NULL	CHAR(10)
DAP_AUDIT_TYPE		CHAR(2)
DAP_SCHOOL		CHAR(12)
DAP_DEGREE		CHAR(12)
DAP_ACTIVE_TERM		CHAR(8)
DAP_CLASS_ID		CHAR(6)
DAP_DISCIPLINE		CHAR(12)
DAP_COURSE_NUM		CHAR(12)
DAP_COURSE_TITLE		CHAR(50)
DAP_TERM		CHAR(8)
DAP_TRANSFER		CHAR(1)
DAP_REPEAT_PLCY1		CHAR(1)
DAP_CLASS_STATUS		CHAR(2)
DAP_REPEAT_DISC		CHAR(12)
DAP_REPEAT_NUM		CHAR(12)
DAP_LOCATION		CHAR(12)
DAP_GRADE_TYPE		CHAR(6)
DAP_TRANSFER_TYPE		CHAR(4)
DAP_GRADE		CHAR(6)
DAP_GRADE_NUM		NUMBER(7,3)
DAP_GRADE_POINTS		NUMBER(7,3)
DAP_SS_CREDITS		NUMBER(7,3)
DAP_AUD_CREDITS		NUMBER(7,3)
DAP_GPA_CREDITS		NUMBER(7,3)
DAP_GPA_GRD_PTS		NUMBER(7,3)
DAP_PASSFAIL		CHAR(1)
DAP_INCOMPLETE		CHAR(1)
DAP_PASS		CHAR(1)
DAP_FALLTHROUGH		CHAR(1)
DAP_INPROGRESS		CHAR(1)
DAP_GRADEERROR		CHAR(1)
DAP_INSUFFICIENT		CHAR(1)
DAP_INSUFFMAJOR		CHAR(1)
DAP_REASON_INSUF		CHAR(2)
DAP_ERROR_NUMBER		CHAR(4)
DAP_TR_COURSE		CHAR(19)
DAP_TR_SCHL_NAME		CHAR(30)
DAP_WITH_DATA		CHAR(30)
DAP_TR_TITLE		CHAR(50)
DAP_CRN		CHAR(10)
DAP_CREATE_DATE		DATE
UNIQUE_ID	NOT NULL	NUMBER(10)
UNIQUE_KEY	NOT NULL	CHAR(36)

UCX-CFG020 RESULTS

See the UCX-CFG020 RESULTS documentation for exact fields.

The CFG020 RESULTS record should be used to control the kind of records that are created for each degree audit report. By setting a flag to N in this CFG020 record you are telling Degree Works to not build results records for that kind of information. Because of this, you will be limited in the types of questions you can ask of the data. Turning off the remarks, for example, is probably okay since you probably don't ever want to query the remarks. Turning off course rule advice, on the other hand, is probably a bad idea since you will not know what classes are needed by your student body.

CFG020 RESULTS flag	Which Result-types it controls
Build stuinfo	CATALOGYEAR, GOALDATA
Build block header crcl needed	BLOCKCRCLNEEDED
Build block header crcl applied	BLOCKCRCLAPPLIED
Build block header advice	HEADERADVICE
Build block header requirements	HEADERQUAL
Build classes applied	CLASSAPPLIED, FALLCLASSAPPLIED, FALLNONCRAPPLIED, OTLCLASSAPPLIED, INSUFFCLASSAPPLIED
Build remarks	REMARK
Build fall-through	FALLCRCL, FALLCLASSAPPLIED, FALLNONCRAPPLIED
Build over-the-limit	OTLCRCL, OTLCLASSAPPLIED
Build insufficient	INSUFFCRCL, INSUFFCLASSAPPLIED
Build rule proxy advice	RULEADVICE
Build block rule label	LABEL
Build block rule advice	RULEADVICE, QUALADVICE
Build blocktype rule label	LABEL
Build blocktype rule advice	RULEADVICE, QUALADVICE
Build complete rule label	LABEL
Build group rule label	LABEL
Build group rule advice	RULEADVICE, QUALADVICE
Build subset rule label	LABEL
Build subset rule advice	RULEADVICE, QUALADVICE
Build noncourse rule label	LABEL
Build noncourse rule advice	RULEADVICE, QUALADVICE
Build course rule label	LABEL
Build course rule advice	RULEADVICE, QUALADVICE, CRCLNEEDED, CLASSNEEDED
Build course rule CrCl required	CRCLREQUIRED

Result Types

The result-type field on each dap-result-dtl specifies the type of data each record contains. The different result type values are listed here:

Result Type	Description
AUDITERROR	Error from audit
AUDITID	Audit ID used to create the results records.
PLAN	Created for planner/timetabling audits only.
BLOCKCRCLAPPLIED	Number of classes and credits applied to this block
BLOCKCRCLNEEDED	Number of classes and credits still needed on this block

BLOCKGPA	GPA, percent-complete and GPA-grade-points applied to this block
CATALOGYEAR	Student's catalog year
CLASSAPPLIED	Class applied to this rule
CLASSNEEDED	Class needed on rule
CLASSREQUIRED	Class listed on the original requirement; only available for a timetabling audit
CRCLNEEDED	Number of classes and credits still needed on rule
CRCLREQUIRED	Number of classes and credits originally required on rule
FALLCLASSAPPLIED	Fall-through/Electives class applied
FALLCRCL	Fall-through/Electives number of classes and credits applied
FALLNONCRAPPLIED	Fall-through/Electives noncourse applied
HEADERADVICE	Block header qualifier advice
HEADERQUAL	Block header qualifier text
INSUFFCLASSAPPLIED	Insufficient section class applied
INSUFFCRCL	Insufficient section number of classes and credits applied
LABEL	Label for this rule
GOALDATA	Student's list of majors/minors, concentrations, advisors, etc.
NONCRAPPLIED	NonCourses applied
NONCRNEEDED	NonCourses needed
NONCRNUMNEED	Number of NonCourses needed
OTLCLASSAPPLIED	Over-The-Limit class applied
OTLCRCL	Over-The-Limit number of classes and credits applied
QUALADVICE	Rule qualifier advice
REMARK	Block header and rule remarks
RULEADVICE	Rule advice – list classes still needed
AIDCUMCREDITS	Financial Aid: Cum. Total credits earned (res and transfer), cum. credits earned (res)
AIDGRADE	Financial Aid: Cum. graded credits attempted, cum. Grade points, and cum. GPA
AIDTERM	Financial Aid: Last completed term type, active term and previous term
AIDTERMCREDITS	Financial Aid: Credits attempted this term and completed term count
EXCEPTION	Exception applied to audit

For each student, the following fields in the dap-result-dtl contain the same data regardless of the result type:

- STU-ID – must be valid in the dap_student_mst
- AUDIT-TYPE – is AA (Academic), FA (Financial Aid), AE (Athletic), or PL (Plan)
- SCHOOL – school against which the audit was run
- DEGREE – degree against which the audit was run
- CREATE-DATE – date the result record was created
- ACTIVE-TERM – the student's active-term when the data was created

The other fields in the dap-result-dtl differ based on the Result-Type and are described below. Numbers that are right-justified in the Example column represent fields that are numeric in the database; those fields that are left-justified are character database fields

Result Types: ACADEMIC AUDIT DATA

AUDITERROR – Error from audit

Field	Description	Example
Block-Seq-Num	Always 93	93
Result-Seq-Num	Used to sort result records for this student	167
Req-ID	AUDERROR	AUDERROR
Rule-ID	(not used)	0
Node-Type	(not used)	0
Value1	Error from UCX-SYS998	3712
Value2	(not used)	(blank)
Value3	(not used)	(blank)
Value4	(not used)	(blank)
Number1	(not used)	0
Number2	(not used)	0
Number3	(not used)	0
Number4	(not used)	0
Freetext	Error nnnn occurred in audit	Error 3712 occurred in audit

AUDITID – audit ID, date and time of audit

Field	Description	Example
Block-Seq-Num	(not used)	0
Result-Seq-Num	Used to sort result records for this student	1
Req-ID	Always set to STUINFO	STUINFO
Rule-ID	(not used)	0
Node-Type	(not used)	0
Value1	Audit-ID from dap-audit-dtl	AA000123
Value2	Date when the audit was run	20050828
Value3	Time when the audit was run	1456
Value4	(not used)	(blank)
Number1	(not used)	0
Number2	(not used)	0
Number3	(not used)	0
Number4	(not used)	0
Freetext	(not used)	(blank)

BLOCKCRCLAPPLIED – Number of classes and credits applied to this block

Field	Description	Example
Block-Seq-Num	Sequence of the block in the audit	1
Result-Seq-Num	Used to sort result records for this student	67
Req-ID	Requirement ID of this block – valid in dap-req-block	RA000123
Rule-ID	(not used)	0
Node-Type	(not used)	0
Value1	Credits applied	87
Value2	Classes applied	20
Value3	(not used)	(blank)
Value4	(not used)	(blank)
Number1	Credits applied	87
Number2	Classes applied	20
Number3	(not used)	0
Number4	(not used)	0
Freetext	(not used)	(blank)

BLOCKRCLNEEDED – Number of classes and credits still needed on this block

Field	Description	Example
Block-Seq-Num	Sequence of the block in the audit	1
Result-Seq-Num	Used to sort result records for this student	67
Req-ID	Requirement ID of this block – valid in dap-req-block	RA000123
Rule-ID	(not used)	0
Node-Type	(not used)	0
Value1	Credits needed	43
Value2	Classes needed	15
Value3	(not used)	(blank)
Value4	(not used)	(blank)
Number1	Credits needed	43
Number2	Classes needed	15
Number3	(not used)	0
Number4	(not used)	0
Freetext	(not used)	(blank)

BLOCKGPA – Percent-complete, GPA and GPA-grade-points applied to this block

Field	Description	Example
Block-Seq-Num	Sequence of the block in the audit	1
Result-Seq-Num	Used to sort result records for this student	67
Req-ID	Requirement ID of this block – valid in dap-req-block	RA000123
Rule-ID	(not used)	0
Node-Type	(not used)	0
Value1	Block percent complete	76.392
Value2	Block GPA	3.459
Value3	Block grade points used in GPA calculation	278.5
Value4	Block type	MAJOR
Number1	Block percent complete	76.392
Number2	Block GPA	3.459
Number3	Block grade points used in GPA calculation	278.5
Number4	(not used)	0
Freetext	(not used)	(blank)

CATALOGYEAR – student's overall catalog year

Field	Description	Example
Block-Seq-Num	(not used)	0
Result-Seq-Num	Used to sort result records for this student	2
Req-ID	Always set to STUINFO	STUINFO
Rule-ID	(not used)	0
Node-Type	(not used)	0
Value1	Student's overall catalog year	20052006
Value2	(not used)	(blank)
Value3	(not used)	(blank)
Value4	(not used)	(blank)
Number1	(not used)	0
Number2	(not used)	0
Number3	(not used)	0
Number4	(not used)	0
Freetext	(not used)	(blank)

PLAN – audit ID, date and time of audit

Field	Description	Example
Block-Seq-Num	(not used)	0
Result-Seq-Num	Used to sort result records for this student	1
Req-ID	Always set to STUINFO	STUINFO
Rule-ID	(not used)	0
Node-Type	(not used)	0
Value1	P if data created from a plan; T if data came from a template	P
Value2	Cutoff term as specified in Transit – DAP59	201510
Value3	(not used)	1456
Value4	(not used)	(blank)
Number1	(not used)	0
Number2	(not used)	0
Number3	(not used)	0
Number4	(not used)	0
Freetext	sep_plan.plan_id or sep_tmpl_mst.tmpl_mst_id	ASDFKA897ASDFKA

CLASSAPPLIED – Class applied to this rule

Field	Description	Example
Block-Seq-Num	Sequence of the block in the audit	1
Result-Seq-Num	Used to sort result records for this student	67
Req-ID	Requirement ID of this block – valid in dap-req-block	RA000123
Rule-ID	Rule sequence number	5-2
Node-Type	Always 4200 for course rules	4200
Value1	Discipline	ACCT
Value2	Number	112
Value3	Dap-class-id on the dap-resclass-dtl	0031
Value4	(not used)	(blank)
Number1	(not used)	0
Number2	(not used)	0
Number3	(not used)	0
Number4	(not used)	0
Freetext	Discipline and number	ACCT 112

CLASSNEEDED – Class needed on rule

Field	Description	Example
Block-Seq-Num	Sequence of the block in the audit	1
Result-Seq-Num	Used to sort result records for this student	67
Req-ID	Requirement ID of this block – valid in dap-req-block	RA000123
Rule-ID	Rule sequence number	5-2
Node-Type	Always 4200 for course rules	4200
Value1	Discipline	ACCT
Value2	Number	112
Value3	WITH advice	ATTR = RORY
Value4	MUSTTAKE or MAYTAKE or CANTTAKE (see special topic on these tags)	MUSTTAKE
Number1	(not used)	0
Number2	(not used)	0
Number3	(not used)	0
Number4	(not used)	0
Freetext	Discipline and number and WITH advice	ACCT 112 Special Grade

Please note that when the WITH advice in Value3 contains an attribute, the word “ATTRIBUTE” is shortened to “ATTR” so that the value can fit into the database field. For example, if “ATTRIBUTE = RORY” is found in the WITH advice it is shortened to “ATTR = RORY”. In addition, when the WITH advice is longer than 12 characters only the first 12 characters appear in this field.

CLASSREQUIRED – Class from original requirement

Only available for a timetabling audit

Field	Description	Example
Block-Seq-Num	Sequence of the block in the audit	1
Result-Seq-Num	Used to sort result records for this student	67
Req-ID	Requirement ID of this block – valid in dap-req-block	RA000123
Rule-ID	Rule sequence number	5-2
Node-Type	Always 4200 for course rules	4200
Value1	Discipline	ACCT
Value2	Number	112
Value3	WITH advice	Special grade
Value4	(not used)	(blank)
Number1	(not used)	0
Number2	(not used)	0
Number3	(not used)	0
Number4	(not used)	0
Freetext	Discipline and number and WITH advice	ACCT 112 Special Grade

CRCLNEEDED – Number of classes and credits still needed on rule

Field	Description	Example
Block-Seq-Num	Sequence of the block in the audit	1
Result-Seq-Num	Used to sort result records for this student	67
Req-ID	Requirement ID of this block – valid in dap-req-block	RA000123
Rule-ID	Rule sequence number	5-2
Node-Type	Always 4200 for course rules	4200
Value1	Credits still needed	10
Value2	Classes still needed	3
Value3	Operator – AND or OR	AND
Value4	Course connector - comma or plus	,
Number1	Credits still needed	10
Number2	Classes still needed	3
Number3	(not used)	0
Number4	(not used)	0
Freetext	Credits and/or Classes	10 Credits and 3 Classes

CRCLREQUIRED – Number of classes and credits originally required on rule

Field	Description	Example
Block-Seq-Num	Sequence of the block in the audit	1
Result-Seq-Num	Used to sort result records for this student	67
Req-ID	Requirement ID of this block – valid in dap-req-block	RA000123
Rule-ID	Rule sequence number	5-2
Node-Type	Always 4200 for course rules	4200
Value1	Credits-begin:Credits-end	10:15
Value2	Classes-begin:Classes-end	3:4
Value3	Operator – AND or OR	AND
Value4	(not used)	(blank)
Number1	(not used)	0
Number2	(not used)	0
Number3	(not used)	0
Number4	(not used)	0
Freetext	Credits:Credits and/or Classes/Classes	5 Credits and 2 Classes

FALLCLASSAPPLIED – Fall-through/Electives class applied

Field	Description	Example
Block-Seq-Num	Always 90	90
Result-Seq-Num	Used to sort result records for this student	167
Req-ID	FALLTHRU	FALLTHRU
Rule-ID	(not used)	0
Node-Type	(not used)	0
Value1	Discipline	BIOL
Value2	Number	107
Value3	Dap-class-id on the dap-resclass-dtl	24
Value4	ECA-OK or ECA-OVERFLOW (if CheckElectiveCreditsAllowed is used)	ECA-OVERFLOW
Number1	(not used)	0
Number2	(not used)	0
Number3	(not used)	0
Number4	(not used)	0
Freetext	Discipline Number	BIOL 107

FALLCRCL – Fall-through/Electives number of classes and credits applied

Field	Description	Example
Block-Seq-Num	Always 90	90
Result-Seq-Num	Used to sort result records for this student	167
Req-ID	FALLTHRU	FALLTHRU
Rule-ID	(not used)	0
Node-Type	(not used)	0
Value1	Credits applied	23
Value2	Classes applied	6
Value3	Noncourses applied	2
Value4	Overflow credits (if CheckElectiveCreditsAllowed is used)	9
Number1	Credits applied	23
Number2	Classes applied	6
Number3	Noncourses applied	2
Number4	Overflow credits (if CheckElectiveCreditsAllowed is used)	9
Freetext	Classes and credits applied	23 Credits and 6 Classes

FALLNONCRAPPLIED – Fall-through/Electives noncourse applied

Field	Description	Example
Block-Seq-Num	Always 90	90
Result-Seq-Num	Used to sort result records for this student	167
Req-ID	FALLTHRU	FALLTHRU
Rule-ID	(not used)	0
Node-Type	(not used)	0
Value1	Code	THESIS
Value2	Value	NOTDONE
Value3	Dap-class-id on the dap-resnoncr-dtl	24
Value4	(not used)	(blank)
Number1	(not used)	0
Number2	(not used)	0
Number3	(not used)	0
Number4	(not used)	0
Freetext	Code Value	THESIS NOTDONE

HEADERADVICE – Block header qualifier advice

Field	Description	Example
Block-Seq-Num	Sequence of the block in the audit	1
Result-Seq-Num	Used to sort result records for this student	67
Req-ID	Requirement ID of this block – valid in dap-req-block	RA000123
Rule-ID	(not used)	0
Node-Type	(not used)	0
Value1	(not used)	(blank)
Value2	(not used)	(blank)
Value3	(not used)	(blank)
Value4	(not used)	(blank)
Number1	(not used)	0
Number2	(not used)	0
Number3	(not used)	0
Number4	(not used)	0
Freetext	Proxy-Advice or real qualifier advice	Lastres not satisfied

HEADERQUAL – Block header qualifier text

Field	Description	Example
Block-Seq-Num	Sequence of the block in the audit	1
Result-Seq-Num	Used to sort result records for this student	67
Req-ID	Requirement ID of this block – valid in dap-req-block	RA000123
Rule-ID	(not used)	0
Node-Type	(not used)	0
Value1	Qualifier name	MAXCLASSES
Value2	Classes or credits required	15
Value3	CREDITS or CLASSES or blank	CLASSES
Value4	May have a value or may be blank – use Number4 below	(blank)
Number1	(not used – will always be 0)	0
Number2	(see table below)	15
Number3	(not used– will always be 0)	0
Number4	(see table below)	3
Freetext	List the classes associated with the qualifier	PE @

For ResultType records of HEADERQUAL the Value1 field will contain the type of qualifier and will contain these values in the Value and Number fields.

Value1	CLASSES
Value2	Minimum number of classes that must be taken
Value3	CLASSES
Value4	Number of classes taken
Number1	0
Number2	Minimum number of classes that must be taken
Number3	0
Number4	Number of classes taken

Value1	CREDITS
Value2	Minimum number of credits that must be taken
Value3	CREDITS
Value4	Number of credits taken
Number1	0
Number2	Minimum number of credits that must be taken
Number3	0
Number4	Number of credits taken

Value1	HIGHPRIORITY
Value2	(blank)
Value3	(blank)
Value4	(blank)
Number1	0
Number2	0
Number3	0
Number4	0

Value1	LASTRES
Value2	Number of classes or credits required in residence
Value3	CREDITS or CLASSES
Value4	Number of in residence classes/credits applied – since the last transfer class
Number1	0
Number2	Number of classes or credits required in residence
Number3	0
Number4	Number of in residence classes/credits applied – since the last transfer class

Value1	LOWPRIORITY
Value2	(blank)
Value3	(blank)
Value4	(blank)
Number1	0
Number2	0
Number3	0
Number4	0

Value1	MAXCLASSES
Value2	Maximum number of classes that can be taken from a specific list of courses
Value3	CLASSES
Value4	Number of classes applied
Number1	0
Number2	Maximum number of classes that can be taken from a specific list of courses

Number3	0
Number4	Number of classes applied

Value1	MAXCREDITS
Value2	Maximum number of credits that can be taken from a specific list of courses
Value3	CREDITS
Value4	Number of credits applied
Number1	0
Number2	Maximum number of credits that can be taken from a specific list of courses
Number3	0
Number4	Number of credits applied

Value1	MAXPASSFAIL
Value2	Maximum number of classes/credits that can be taken passfail
Value3	CREDITS or CLASSES
Value4	Number of passfail classes/credits applied
Number1	0
Number2	Maximum number of classes/credits that can be taken passfail
Number3	0
Number4	Number of passfail classes/credits applied

Value1	MAXPERDISC
Value2	Maximum number of classes/credits that can be taken from this list of disciplines
Value3	CREDITS or CLASSES
Value4	Number of classes/credits applied
Number1	0
Number2	Maximum number of classes/credits that can be taken from this list of disciplines
Number3	0
Number4	Number of classes/credits applied

Value1	MAXTERM
Value2	Maximum number of classes/credits that can be taken per term in the specified list of courses
Value3	CREDITS or CLASSES
Value4	Number of classes/credits applied to the last term processed - mostly meaningless data
Number1	0
Number2	Maximum number of classes/credits that can be taken per term in the specified list of courses
Number3	0
Number4	Number of classes/credits applied to the last term processed - mostly meaningless data

Value1	MAXTRANSFER
Value2	Maximum number of classes/credits that can be taken from a transfer institution
Value3	CREDITS or CLASSES
Value4	Number of transfer classes/credits applied
Number1	0
Number2	Maximum number of classes/credits that can be taken from a transfer institution
Number3	0
Number4	Number of transfer classes/credits applied

Value1	MINCLASSES
Value2	Minimum number of classes that must be taken from a specific list of courses

Value3	CLASSES
Value4	Number of classes applied
Number1	0
Number2	Minimum number of classes that must be taken from a specific list of courses
Number3	0
Number4	Number of classes applied

Value1	MINCREDITS
Value2	Minimum number of credits that must be taken from a specific list of courses
Value3	CREDITS
Value4	Number of credits applied
Number1	0
Number2	Minimum number of credits that must be taken from a specific list of courses
Number3	0
Number4	Number of credits applied

Value1	MINGPA
Value2	Minimum GPA that must be achieved
Value3	(blank)
Value4	GPA applied
Number1	0
Number2	Minimum GPA that must be achieved
Number3	0
Number4	GPA applied

Value1	MINGRADE
Value2	Minimum grade classes must have in order to be used on the rules in this block
Value3	(blank)
Value4	(blank)
Number1	0
Number2	Minimum grade classes must have in order to be used on the rules in this block
Number3	0
Number4	0

Value1	MINPERDISC
Value2	Minimum number of classes/credits that must be taken from this list of disciplines
Value3	CREDITS or CLASSES
Value4	Number of classes/credits applied
Number1	0
Number2	Minimum number of classes/credits that must be taken from this list of disciplines
Number3	0
Number4	Number of classes/credits applied

Value1	MINRES
Value2	Minimum number of classes/credits that must be taken in residence
Value3	CREDITS or CLASSES
Value4	Number of classes/credits taken in residence
Number1	0
Number2	Minimum number of classes/credits that must be taken in residence
Number3	0
Number4	Number of classes/credits taken in residence

Value1	MINTERM
Value2	Minimum number of classes/credits that must be taken per term in the specified list of courses
Value3	CREDITS or CLASSES
Value4	(blank)
Number1	0
Number2	Minimum number of classes/credits that must be taken per term in the specified list of courses
Number3	0
Number4	0

Value1	NONEXCLUSIVE
Value2	Maximum number of classes/credits that can be shared with the blocks listed
Value3	CREDITS or CLASSES
Value4	(blank)
Number1	0
Number2	Maximum number of classes/credits that can be shared with the blocks listed
Number3	0
Number4	0

Value1	OPTIONAL
Value2	(blank)
Value3	(blank)
Value4	(blank)
Number1	0
Number2	0
Number3	0
Number4	0

Value1	SAMEDISC
Value2	(blank)
Value3	(blank)
Value4	(blank)
Number1	0
Number2	0
Number3	0
Number4	0

Value1	SPMAXCREDITS
Value2	Maximum number of split credits that can be taken from a specific list of courses
Value3	CREDITS
Value4	Number of credits applied
Number1	0
Number2	Maximum number of split credits that can be taken from a specific list of courses
Number3	0
Number4	Number of credits applied

Value1	SPMAXTERM
Value2	Maximum number of split classes/credits that can be taken per term in the specified list of courses
Value3	CREDITS or CLASSES
Value4	Number of classes/credits applied to the last term processed - mostly meaningless data
Number1	0
Number2	Maximum number of split classes/credits that can be taken per term in the specified list of courses
Number3	0
Number4	Number of classes/credits applied to the last term processed - mostly meaningless data

Value1	UNDER
Value2	Maximum number of classes/credits that should be taken out of the specified list of courses
Value3	CREDITS or CLASSES
Value4	Number of classes/credits applied from this list of courses
Number1	0
Number2	Maximum number of classes/credits that should be taken out of the specified list of courses
Number3	0
Number4	Number of classes/credits applied from this list of courses

INSUFFCLASSAPPLIED – Insufficient class applied

Field	Description	Example
Block-Seq-Num	Always 92	92
Result-Seq-Num	Used to sort result records for this student	167
Req-ID	INSUFF	INSUFF
Rule-ID	(not used)	0
Node-Type	(not used)	0
Value1	Discipline	BIOL
Value2	Number	107
Value3	Dap-class-id on the dap-resclass-dtl	24
Value4	(not used)	(blank)
Number1	(not used)	0
Number2	(not used)	0
Number3	(not used)	0
Number4	(not used)	0
Freetext	Discipline Number	BIOL 107

INSUFFCRCL – Insufficient number of classes and credits applied

Field	Description	Example
Block-Seq-Num	Always 92	92
Result-Seq-Num	Used to sort result records for this student	167
Req-ID	INSUFF	INSUFF
Rule-ID	(not used)	0
Node-Type	(not used)	0
Value1	Credits applied	23
Value2	Classes applied	6
Value3	(not used)	(blank)
Value4	(not used)	(blank)
Number1	Credits applied	23
Number2	Classes applied	6
Number3	(not used)	0
Number4	(not used)	0
Freetext	Classes and credits applied	23 Credits and 6 Classes

LABEL – Label for this rule – tied to student audits

Field	Description	Example
Block-Seq-Num	Sequence of the block in the audit	1
Result-Seq-Num	Used to sort result records for this student	67
Req-ID	Requirement ID of this block – valid in dap-req-block	RA000123
Rule-ID	Rule sequence number	5-2
Node-Type	Depends on type of rule	4200
Value1	Rule percent-complete	65
Value2	Credits applied	12
Value3	Classes applied	3
Value4	(not used)	(blank)
Number1	Rule percent-complete	65
Number2	Credits applied	12
Number3	Classes applied	3
Number4	(not used)	0
Freetext	Label text	History Requirement

LABEL – Label for this rule – tied to parsed blocks (dap_stu_id=req-id)

Field	Description	Example
Block-Seq-Num	Always 1	1
Result-Seq-Num	Used to sort the labels in this block	12
Req-ID	Requirement ID of this block – valid in dap-req-block	RA000123
Rule-ID	Rule sequence number	5-2
Node-Type	Depends on type of rule	4200
Value1	Node ID	178
Value2	(not used)	12
Value3	(not used)	3
Value4	(not used)	(blank)
Number1	Node ID	178
Number2	(not used)	0
Number3	(not used)	0
Number4	(not used)	0
Freetext	Label text	History Requirement

GOALDATA – student’s majors minors, concentrations, advisors etc codes

Field	Description	Example
Block-Seq-Num	(not used)	0
Result-Seq-Num	Used to sort result records for this student	4
Req-ID	Always set to STUINFO	STUINFO
Rule-ID	(not used)	0
Node-Type	(not used)	0
Value1	Goal code: MAJOR, MINOR, CONC, ADVISOR, PROGRAM, COLLEGE, STUSTATUS, LIBL, SPEC	MATH
Value2	Value of goal	ENGL
Value3	Catalog year associated with this goal	20122013
Value4	(not used)	(blank)
Number1	(not used)	0
Number2	(not used)	0
Number3	(not used)	0
Number4	(not used)	0
Freetext	(not used)	(blank)

NONCRAPPLIED – NonCourses applied

Field	Description	Example
Block-Seq-Num	Sequence of the block in the audit	1
Result-Seq-Num	Used to sort result records for this student	67

Req-ID	Requirement ID of this block – valid in dap-req-block	RA000123
Rule-ID	Rule sequence number	5-2
Node-Type	Always 4800 for noncourse rules	4800
Value1	Noncourse code (from UCX-SCR003)	THESIS
Value2	Noncourse value or blank	DONE
Value3	Dap-class-id on the dap-resnoncr-dtl	42
Value4	(not used)	(blank)
Number1	(not used)	0
Number2	(not used)	0
Number3	(not used)	0
Number4	(not used)	0
Freetext	Code Value	THESIS DONE

NONCRNEEDED – NonCourses needed

Field	Description	Example
Block-Seq-Num	Sequence of the block in the audit	1
Result-Seq-Num	Used to sort result records for this student	67
Req-ID	Requirement ID of this block – valid in dap-req-block	RA000123
Rule-ID	Rule sequence number	5-2
Node-Type	Always 4800 for noncourse rules	4800
Value1	Noncourse code (from UCX-SCR003)	THESIS
Value2	Noncourse relational operator	=
Value3	Noncourse value or blank	DONE
Value4	(not used)	(blank)
Number1	(not used)	0
Number2	(not used)	0
Number3	(not used)	0
Number4	(not used)	0
Freetext	Code relational-operator Value	THESIS = DONE

NONCRNUMNEED – Number of NonCourses needed

Field	Description	Example
Block-Seq-Num	Sequence of the block in the audit	1
Result-Seq-Num	Used to sort result records for this student	67
Req-ID	Requirement ID of this block – valid in dap-req-block	RA000123
Rule-ID	Rule sequence number	5-2
Node-Type	Always 4800 for noncourse rules	4800
Value1	Number of noncourses	1
Value2	(not used)	(blank)
Value3	(not used)	(blank)
Value4	(not used)	(blank)
Number1	Number of noncourses	1
Number2	(not used)	0
Number3	(not used)	0
Number4	(not used)	0
Freetext	Num-noncourses "Noncourses"	1 Noncourses

OTLCLASSAPPLIED – Over-the-limit class applied

Field	Description	Example
Block-Seq-Num	Always 91	91
Result-Seq-Num	Used to sort result records for this student	167
Req-ID	OTL	OTL
Rule-ID	(not used)	0
Node-Type	(not used)	0
Value1	Discipline	BIOL
Value2	Number	107
Value3	Dap-class-id on the dap-resclass-dtl	24
Value4	(not used)	(blank)
Number1	(not used)	0
Number2	(not used)	0
Number3	(not used)	0
Number4	(not used)	0
Freetext	Discipline Number	BIOL 107

OTLCRCL – Over-the-limit number of classes and credits applied

Field	Description	Example
Block-Seq-Num	Always 91	91
Result-Seq-Num	Used to sort result records for this student	167
Req-ID	OTL	OTL
Rule-ID	(not used)	0
Node-Type	(not used)	0
Value1	Credits applied	23
Value2	Classes applied	6
Value3	(not used)	(blank)
Value4	(not used)	(blank)
Number1	Credits applied	23
Number2	Classes applied	6
Number3	(not used)	0
Number4	(not used)	0
Freetext	Classes and credits applied	23 Credits and 6 Classes

QUALADVICE – Rule qualifier advice

Field	Description	Example
Block-Seq-Num	Sequence of the block in the audit	1
Result-Seq-Num	Used to sort result records for this student	67
Req-ID	Requirement ID of this block – valid in dap-req-block	RA000123
Rule-ID	Rule sequence number	5-2

Node-Type	Depends on type of rule	4200
Value1	(not used)	(blank)
Value2	(not used)	(blank)
Value3	(not used)	(blank)
Value4	(not used)	(blank)
Number1	(not used)	0
Number2	(not used)	0
Number3	(not used)	0
Number4	(not used)	0
Freetext	Rule qualifier advice text	Minspread not satisfied

REMARK – Block header and rule remarks

Field	Description	Example
Block-Seq-Num	Sequence of the block in the audit	1
Result-Seq-Num	Used to sort result records for this student	67
Req-ID	Requirement ID of this block – valid in dap-req-block	RA000123
Rule-ID	0 if part of header; non-zero if part of a rule	5
Node-Type	(not used)	0
Value1	(not used)	(blank)
Value2	(not used)	(blank)
Value3	(not used)	(blank)
Value4	(not used)	(blank)
Number1	(not used)	0
Number2	(not used)	0
Number3	(not used)	0
Number4	(not used)	0
Freetext	Remark text	2.5 GPA required

RULEADVICE – Textual rule advice

Field	Description	Example
Block-Seq-Num	Sequence of the block in the audit	1
Result-Seq-Num	Used to sort result records for this student	67
Req-ID	Requirement ID of this block – valid in dap-req-block	RA000123
Rule-ID	Rule sequence number	5-2
Node-Type	Depends on type of rule	4200
Value1	(not used)	(blank)
Value2	(not used)	(blank)
Value3	(not used)	(blank)
Value4	(not used)	(blank)
Number1	(not used)	0
Number2	(not used)	0
Number3	(not used)	0
Number4	(not used)	0
Freetext	Proxy-Advice or rule specific advice	See major block

EXCEPTION – Exception applied to the audit

Field	Description	Example
Block-Seq-Num	Sequence of the block in the audit	1
Result-Seq-Num	Used to sort result records for this student	67
Req-ID	Requirement ID of this block – valid in dap-req-block	RA000123
Rule-ID	Rule sequence number	5-2
Node-Type	Depends on type of rule	4200
Value1	Exception ID number (dap_except_dtl.dap_exc_num)	8
Value2	Exception type – see UCX-AUD014	AH
Value3	Audit tree node id where exception was applied (dap_except_dtl.dap_node_id)	178
Value4	ENFORCED or NOTENFORCED	ENFORCED
Number1	Exception ID number (dap_except_dtl.dap_exc_num)	8
Number2	(not used)	0
Number3	Audit tree node id where exception was applied (dap_except_dtl.dap_node_id)	178
Number4	(not used)	0
Freetext	Reason why exception was not applied or text saying it was applied	Exception was applied successfully

You can link to the `dap_except_dtl` to get more details about the exception by linking by the `dap_stu_id` field on both tables and from the `dap_number1` field on this table to the `dap_exc_num` field on the `dap_except_dtl`. The `dap_exc_buffer` field has the course information at specific locations in the buffer.

See the *Exceptions* section of this document for details on the contents of the `dap_except_dtl`.

Result Types: FINANCIAL AID AUDIT DATA

AIDCUMCREDITS – Financial Aid Cumulative Credits

Field	Description	Example
Block-Seq-Num	Always 95	95
Result-Seq-Num	Used to sort result records for this student	167
Req-ID	AID	AID
Rule-ID	(not used)	0
Node-Type	(not used)	0
Value1	Cumulative total credits earned (residence and transfer)	37
Value2	Cumulative credits earned (residence only)	28
Value3	(not used)	(blank)
Value4	(not used)	(blank)
Number1	Cumulative total credits earned (residence and transfer)	37
Number2	Cumulative credits earned (residence only)	28

Number3	(not used)	0
Number4	(not used)	0
Freetext	(not used)	(blank)

AIDGRADE – Financial Aid GPA information

Field	Description	Example
Block-Seq-Num	Always 95	95
Result-Seq-Num	Used to sort result records for this student	167
Req-ID	AID	AID
Rule-ID	(not used)	0
Node-Type	(not used)	0
Value1	Cumulative graded credit attempted	37
Value2	Cumulative grade points	123
Value3	Cumulative GPA	3.07
Value4	(not used)	(blank)
Number1	Cumulative graded credit attempted	37
Number2	Cumulative grade points	123
Number3	Cumulative GPA	3.07
Number4	(not used)	0
Freetext	(not used)	(blank)

AIDTERM – Financial Aid Term information

Field	Description	Example
Block-Seq-Num	Always 95	95
Result-Seq-Num	Used to sort result records for this student	167
Req-ID	AID	AID
Rule-ID	(not used)	0
Node-Type	(not used)	0
Value1	Last completed term type	SPRING
Value2	Active Term	200910
Value3	Previous Term	200830
Value4	(not used)	(blank)
Number1	(not used)	0
Number2	(not used)	0
Number3	(not used)	0
Number4	(not used)	0
Freetext	(not used)	(blank)

AIDTERMCREDITS – Financial Aid Term Credits

Field	Description	Example
Block-Seq-Num	Always 95	95
Result-Seq-Num	Used to sort result records for this student	167
Req-ID	AID	AID
Rule-ID	(not used)	0
Node-Type	(not used)	0
Value1	Credits attempted this term	12
Value2	Completed term count	3
Value3	(not used)	(blank)
Value4	(not used)	(blank)
Number1	Credits attempted this term	12
Number2	Completed term count	3
Number3	(not used)	0
Number4	(not used)	0
Freetext	(not used)	(blank)

Node Types

This is the list of node types numbers and the type of rule or qualifier to go with each:

Rules

Type of Rule	Node Type
COURSE_RULE	4200
IF_STMT_RULE	4300
BLOCK_RULE	4400
BLOCKTYPE_RULE	4500
GROUP_RULE	4600
SUBSET_RULE	4700
NONCOURSE_RULE	4800
COMPLETE_RULE	4900
INCLUDEBLOCKS_RULE	4950
INCOMPLETE_RULE	4971

Qualifiers

Type of Qualifier	Node Type
MAXCLASS	4101
MINCLASS	4102
MAXCREDIT	4103
MINCREDIT	4104
MAXTERM_B	4105
MINTERM_B	4106
MAXPERDISC	4107
MINPERDISC	4108
SAMEDISC	4109
MAXTRANSFER	4110
NONEXCLUSIVE	4111
LASTRES_CLASSES	4112
LASTRES_CREDITS	4113
MAXPF_CLASSES	4114
MAXPF_CREDITS	4115
MINGPA	4116
MINGRADE	4117
MINRES_CLASSES	4118
MINRES_CREDITS	4119
OPTIONAL	4120
CLASSES_CREDITS	4121
EXCLUSIVE	4122
MINAREAS	4123
MAXTERM_CLASSES	4124
MAXTERM_CREDITS	4125
MINTERM_CLASSES	4126

Type of Qualifier	Node Type
MINTERM_CREDITS	4127
MAXSPREAD	4128
MINSREAD	4129
NOTGPA	4130
SPMAXCREDIT	4131
SPMAXTERM_B	4132
KEEPNEWEST	4133
KEEPOLDEST	4134
HIGH_PRIORITY	4135
LOW_PRIORITY	4136
STANDALONEBLOCK	4137
RULETAG	4138
UNDER	4139
CHECKELECTIVES	4140
LOWEST_PRIORITY	4141
HEADERTAG	4142

Classic Student Educational Planner (SEP)

This section refers to the Classic Student Educational Planner (SEP) that is under the Planner tab in the web interface. The SEP tool stores planned class data in a format that may be queried using database tools.

The SEP data is stored in the **dap_planner_dtl**, **dap_plancrs_dtl**, and **dap_plannote_dtl** database tables.

Database layout – SEP tables

See schema/dapdb for more details.

```
<< *****>>
<<      DAP-PLANNER-DTL      Detail Data Set      Database DAP >>
<< *****>>

NAME:  DAP-PLANNER-DTL, DETAIL (10/20);

      <<
      The SCHOOL and DEGREE are to be used by CPA reports.
      The CATALOG-YR is for display only to help define the plan.
      The PLAN-ID (eg: PA000123) comes from the dap-template-mst.
      There is normally one plan per student but the PLAN-NUM
      allows multiple plans per student.
      The ACTIVE-FLAG should be set to Y for only one of the students
      plans; our reports will ignore inactive plans.
      The user can enter a DESCRIPTION about the plan - useful if
      there is more than one plan.
      The WHO field contains the ID of the last modifier.
      The WHEN field contains the date of the last modification.
      >>

ENTRY:  DAP-STU-ID (!DAP-STUDENT-MST (DAP-PLAN-NUM)),
        DAP-SCHOOL,
        DAP-DEGREE,
        DAP-CATALOG-YR,
        DAP-PLAN-ID,
        DAP-ACTIVE-FLAG,
        DAP-DESCRIPTION,
        DAP-PLAN-NUM,
        DAP-STU-APPROVAL,
        DAP-STUAPPR-DATE,
        DAP-ADV-APPROVAL,
        DAP-ADVAPPR-DATE,
        DAP-MOD-ID,
        DAP-MOD-DATE;
```

```
<< *****>>
<< DAP-PLANCRS-DTL Detail Data Set Database DAP >>
<< *****>>
```

NAME: DAP-PLANCRS-DTL, DETAIL (10/20);

```
<<
The SCHOOL and DEGREE are to be used by reports.
The ACTIVE-FLAG should be set to the value from the planner-dtl;
the flag is on this record to make reporting faster/easier.
For each TERM there will be a list of courses the student
is considering taking.
DISCIPLINE and COURSE-NUM identify a course to be taken.
The SEQ-NUM is used to keep the courses in the order entered
by the user.
Courses with the same PLAN-NUM are part of the same plan.
>>
```

```
ENTRY: DAP-STU-ID (!DAP-STUDENT-MST (DAP-TERM)),
DAP-SCHOOL,
DAP-DEGREE,
DAP-ACTIVE-FLAG,
DAP-TERM,
DAP-DISCIPLINE,
DAP-COURSE-NUM,
DAP-CREDITS,
DAP-GRID-ROW,
DAP-GRID-COL,
DAP-CRS-SEQ,
DAP-PLAN-NUM;
```

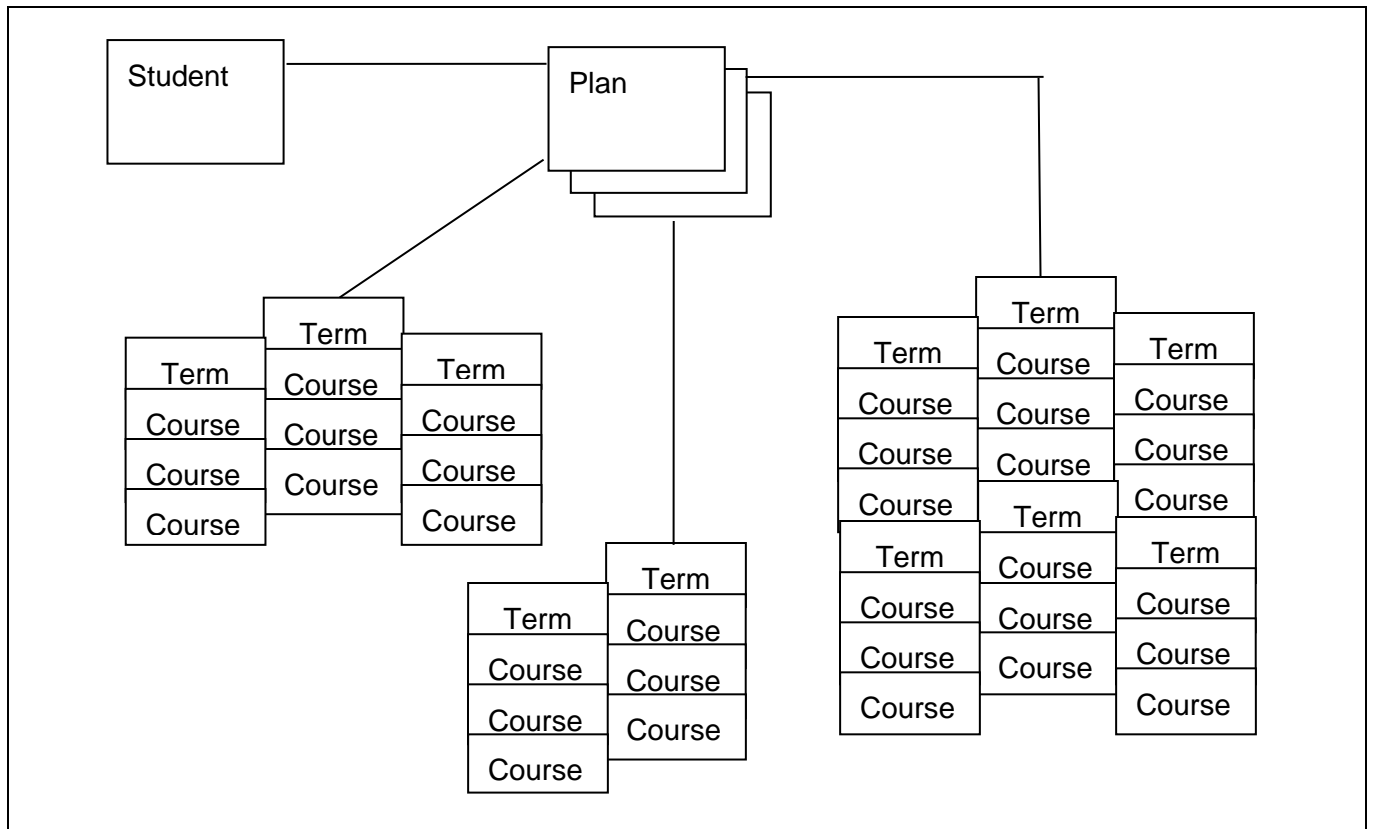
```
<< *****>>
<< DAP-PLANNOTE-DTL Detail Data Set Database DAP >>
<< *****>>
```

NAME: DAP-PLANNOTE-DTL, DETAIL (10/20);

```
<<
The TERM field allows notes to be created on a term basis or as
general notes about the plan (eg: value can be GENERAL or 9999).
The NOTE-TEXT will contain a "line" of characters.
The NOTE-SEQ will keep the text in the order entered by the user.
Notes with the same PLAN-NUM are part of the same plan.
>>
```

```
ENTRY: DAP-STU-ID (!DAP-STUDENT-MST (DAP-PLAN-NUM)),
DAP-TERM,
DAP-NOTE-TEXT,
DAP-NOTE-SEQ,
DAP-PLAN-NUM;
```

Relationships



Each student can have many plans.

Each plan can have many courses.

Each plan can also have many notes.

The plans are linked together by the `dap_stu_id` and `dap_plan_num` columns.

Here is how you would get all the planned courses for a student for a particular term (ex: term = "200401", student ID = "12345")

```
Select dap_discipline, dap_course_num from dap_planner_dtl,  
dap_plancrs_dtl  
where dap_planner_dtl.dap_stu_id = dap_plancrs_dtl.dap_stu_id  
and  
dap_planner_dtl.dap_stu_id = '12345'  
and  
dap_plancrs_dtl.dap_term = '200401';
```

Timetabling

An institute can extract data from the CPA to help determine the student demand for classes. This information can be used to plan class schedules and to determine the resources that will be required for classes; for example, classroom size. The information can also be used by third-party class scheduling tools. Information from the next generation Student Educational Planner (SEP) is used to generate this data in the CPA.

Using a student's active and approved plan, or a temporary template plan (in cases where a student does not have an active, approved plan), an institute can forecast the courses and sections that need to be available for registration in a future term.

Overview

Timetabling data is generated by running the Batch Timetabling Processor (DAP59), which is launched through Transit. The pool of students that have to be processed is determined either with selection criteria or a file of ID numbers. The term for which timetabling data is to be generated must also be specified in Transit. DAP59 will generate a planner audit for the student's active and approved plan for the selected school. If an active and approved plan for that student and school is not found, DAP59 may use a temporary plan for the student instead. A temporary plan is used if the Create Plan from Template Processor (DAP54) was run with the temporary option before running DAP59.

Setup

- Before running DAP59, ensure that the *UCX-CFG020 RESULTS Build Stuinfo* flag is set to **Y** so that all the data required for timetabling is created.

Reporting on the Results

DAP59 loads the timetabling results in `dap_result_dtl`. The additional class data is also loaded in `dap_resclass_dtl` and non-course data is loaded in `dap_resnoncr_dtl`. The `dap_audit_type` is 'PL' on these records.

The `dap_result_dtl` record with the `dap_result_type = PLAN` can be used to determine if the results came from a plan (`dap_value1=P`) or a temporary plan/template (`dap_value1=T`). Additionally, `dap_freetext` contains the `plan_id` from the `sep_plan` or the `tmpl_mst_id` from the `sep_tmpl_mst`.

The `dap_req_id` on the `dap_result_dtl` indicates the block of the audit to which the pre-registered or planned class would apply. If the class would apply to the Fallthrough, Insufficient or Over the Limit sections of the audit, the `dap_req_id` would be FALLTHRU, INSUFF or OTL, respectively.

The `dap_value3` column on the `dap_result_dtl` contains an identifier that can be used to link the class to the `dap_class_id` on the `dap_resclass_dtl`. You must also link the records based on the `dap_stu_id`, `dap_audit_type`, `dap_school`, and `dap_degree` fields.

The `dap_term` field on the `dap_resclass_dtl` is the term code from the plan. Planned classes will have a `dap_grade` of 'PLAN' and a blank `dap_class_status`.

A result record is created for each course listed on the original requirement. This result-type is CLASSREQUIRED and is used only for timetabling.

See the *Result Types* section in this document for additional information.

Student Educational Planner

This section refers to the next generation Student Educational Planner.

The Degree Works Student Educational Planner gives students and their advisors the ability to plan out their educational goals with confidence that they will complete their program on time. For a full description of the planner, see the *Student Educational Planner Administration Guide*. A brief description is provided here.

A plan consists of a series of academic terms each containing one or more *requirements*. A requirement is something that the student must fulfill to keep on track with their program completion goal. There are several different types of requirements that can be chosen by the student:

- The most common type of requirement is a course requirement. These are planned courses a student expects to take.
- Another type of requirement is a GPA requirement. This means that the student plans to achieve an overall, major, or class list GPA of at least a certain level.
- A third type of requirement is a test requirement. This means the student is intending to pass a certain test, for example, English Composition, with a minimum grade.
- The fourth type of requirement is the non-course requirement. This requirement allows for the inclusion of specific requirements that do not fall in the realm of the previous three types, such as honors papers, or recitals.
- The last requirement type is the placeholder criteria, which is meant as a catch all requirement that accepts any free-form requirement the student or advisor may wish to place on the plan. Unlike the previous requirements, placeholder requirements cannot be represented in Scribe, so cannot be checked by an audit, and cannot be tracked.

Requirements can also be grouped together to form a complex requirement.

A summary of the requirement types:

Course	Courses the student plans to take.
GPA	Minimum GPA the student expects to achieve.
Test	A minimum score on a test.
Non-course	A specific requirement chosen from a set of requirements defined by the school.
Placeholder	A free-form catchall requirement that cannot be automatically tracked.
Group	A group of one or more requirements.

Each requirement may express different data items that are specific to that type, and there are data items that all have in common. For example, the course requirement has the data items: course discipline, course number, and minimum grade, while the test requirement has test code and minimum score. Common data items include tracking status, critical flag, and notes. Free format notes are provided at every level of the plan, including the plan itself, terms, groups, and requirements. There are internal notes and public notes, and your role will determine which notes you may see.

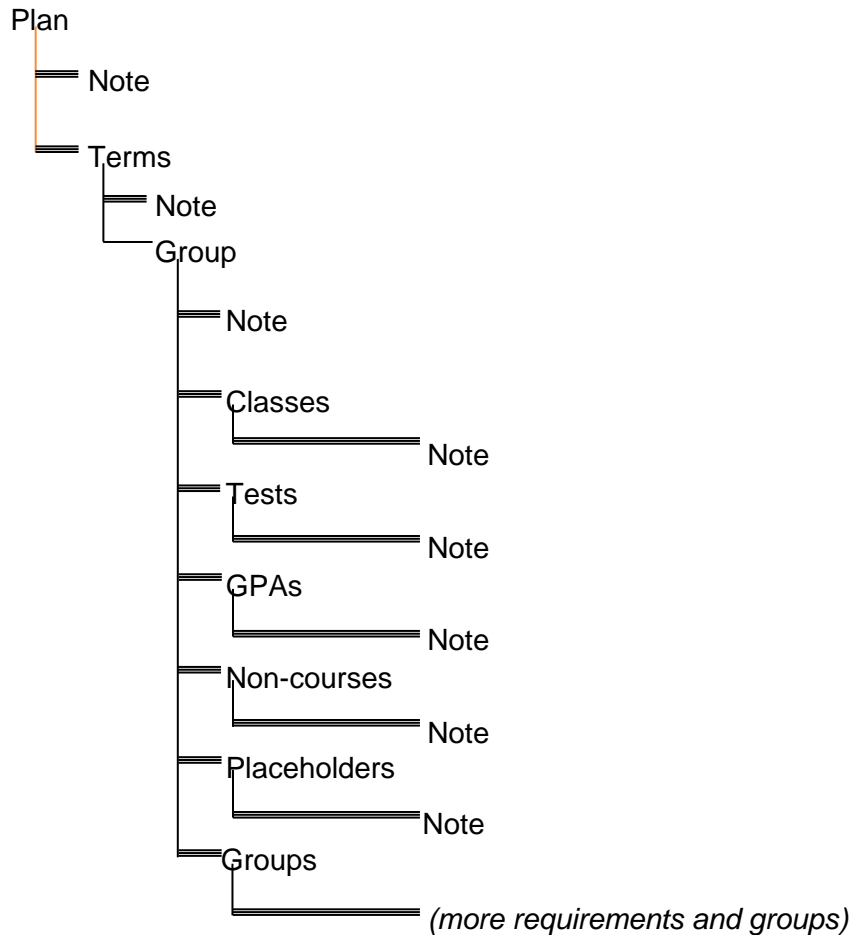
These requirements may be grouped to form more complex requirement, such as (MATH 101 or

ACCT 200) AND (MATH 102 or ACCT 202). There is no limit to the depth of parenthesis that can be expressed in the planner structures. However, the user interface currently limits not only the depth but also the types of requirements that can be grouped. At the current time, only two levels of sub-grouping are allowed and only course requirements are allowed to be included. In fact, the user interface treats these groupings like another type of requirement, called "choice". The choice requirement, however, is really just a grouping of course requirements.

Plans can be created from templates. The structure of templates closely mimics that of plans, and much of the following discussion of plan structure can be applied to templates. Templates have an additional structure, SEP_TMPL_TAG, which allows the templates to be tagged in order to facilitate their organization and search.

Plan Structure

The overall structure is tree-like with nodes hanging under the root plan node. The following diagram illustrates this:



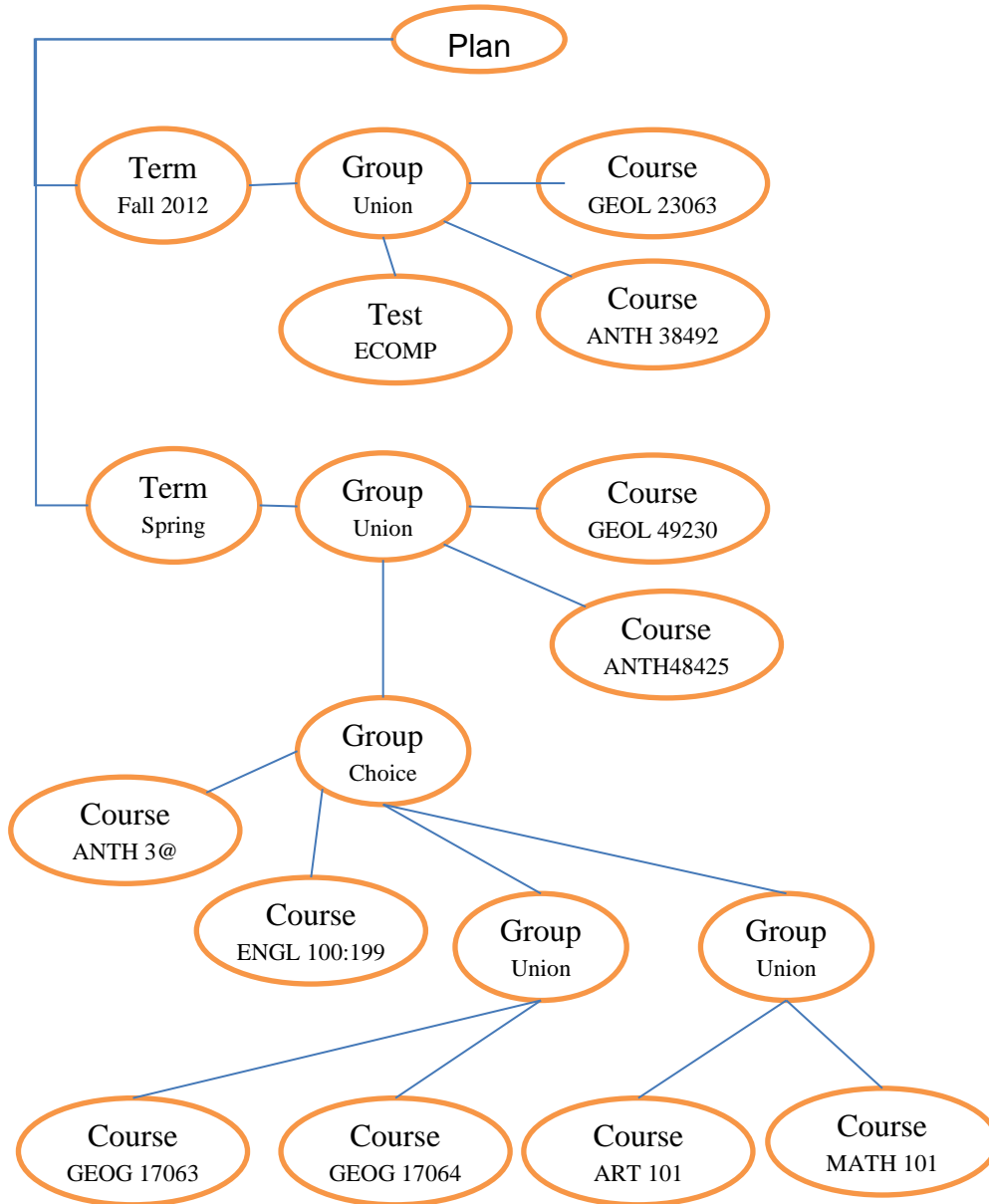
Groups can be of type union (UN) or choice (CH). Union groups contain requirements that must all be met, for example: ENGL 101 and MATH 200. Choice groups contain requirements where only one must be met, for example: ENGL 101 or MATH 200. A group will contain 1 or more requirements and groups. There is no limit to the number of groups or requirements in a group. Only one group is required, and that is the root group under a term, and it is always a union type group.

As an example, if we see in the planner that a student's plan contains the following term requirements:

Term	Fall 2012	
	Course Requirement	GEOL 23063
	Course Requirement	ANTH 38492
	Test Requirement	ECOMP (English Composition)

Term	Spring 2013	
	Course Requirement	GEOL 49230
	Course Requirement	ANTH 48425
	Choice Requirement	ANTH 3@ or ENGL 100:199 or (MATH 101 and ART 101) or (GEOG 17063 and GEOG 17064)

This can be represented by the following diagram:



Note that the second level group (choice) in the Spring 2013 term is shown in the user interface as a “choice” requirement, although it is really just a grouping of courses and groups of courses. The user interface will currently not allow for more depth than shown here.

Plan Data Structures

The data structures necessary to support such a tree structure can be complex. The sections that follow describe each database table and the elements they contain.

Plan Data Definitions

SEP_PLAN

This is the overall parent table for a plan. There is one and only one entry in this table for every plan.

Item Name	Data Type	Maximum Size	Description
PLAN_ID	CHAR	36	The plan object ID, a unique identifier generated for the plan.
STUDENT_ID	CHAR	10	The SIS ID. References the DAP_STU_ID column in the DAP_STUDENT_MST table.
TMPL_MST_ID	CHAR	36	A reference to the TMPL_MST_ID column of the SEP_TMPL_MST. If not empty, it represents the template from which this plan was created.
DESCRIPTION	VARCHAR	80	A free-format description of the plan.
IS_ACTIVE	CHAR	1	"Y" or "N", indicating whether or not this is an active plan.
IS_LOCKED	CHAR	1	"Y" or "N", indicating whether or not the plan is locked.
APPROVAL_STATUS	CHAR	2	A coded value, one of the following AA – Auto approved AP – Approved NO – Needs Approval PE – Pending Approval RJ – Rejected
SCHOOL	VARCHAR	12	A coded value from UCX_STU350, representing the Degree Works school to which this plan applies. E.g. UG – Undergraduate.
DEGREE	VARCHAR	12	A coded value from UCX_STU307, representing the degree to which this plan applies. E.g. BA – Bachelor of Arts.
OFFICIAL_TRACKING_STATUS	VARCHAR	12	The official tracking status for the plan. One of the following: ONTRACK – Plan is on track to completion. OFFTRACK – Plan is not on track to completion. NOTEVALUATED – Tracking status of the plan has not yet been

			evaluated.
UNOFFICIAL_TRACKING_STATUS	VARCHAR	12	The unofficial tracking status for the plan. One of the following: ONTRACK – Plan is on track to completion. OFFTRACK – Plan is not on track to completion. NOTEVALUATED – Tracking status of the plan has not yet been evaluated.
IS_TRACKING_STATUS_CURRENT	CHAR	1	“Y” or “N”. Indicates whether or not any changes have been made to the plan since the tracking status was last calculated.
MODIFY_WHO	VARCHAR	30	The ID of the user who last modified the plan.
MODIFY_DATE	TIMESTAMP	7	The date and time the plan was last modified.
MODIFY_WHAT	VARCHAR	30	The process that last modified the plan.
CREATE_WHO	VARCHAR	30	The ID of the user who created the plan.
CREATE_DATE	TIMESTAMP	7	The date the plan was created.
CREATE_WHAT	VARCHAR	30	The process that created the plan.

SEP_PLAN_NOTE

Contains notes related to the overall plan. There may be an unlimited number of notes tied to a plan. It is linked to the SEP_PLAN table via the PLAN_ID column.

Item Name	Data Type	Maximum Size	Description
PLAN_NOTE_ID	CHAR	36	The note object ID, a unique identifier generated for the note.
PLAN_ID	CHAR	36	Reference to the PLAN_ID column of the SEP_PLAN table to which this note belongs.
NOTE_TEXT	CLOB	unlimited	The text of the note.
AUTHOR	VARCHAR	10	The user ID of the note's author.
SEQUENCE	DECIMAL	6	A number that records the order in which the user placed the note.
INTERNAL	CHAR	1	"Y" or "N" indicating whether or not the note has restricted visibility.
COPIED_FROM_TEMPLATE	CHAR	1	"Y" or "N" indicating whether or not the note was originally copied from a template.
MODIFY_WHO	VARCHAR	30	The ID of the user who last modified the note.
MODIFY_DATE	TIMESTAMP	7	The date and time the note was last modified.
MODIFY_WHAT	VARCHAR	30	The process that last modified the note.
CREATE_WHO	VARCHAR	30	The ID of the user who created the note.
CREATE_DATE	TIMESTAMP	7	The date the note was created.
CREATE_WHAT	VARCHAR	30	The process that created the note.

SEP_PLAN_TERM

This table records information about the term in which the requirements reside. There is one entry in this table for every term that contains requirements. It is linked to the SEP_PLAN table via the PLAN_ID column.

Item Name	Data Type	Maximum Size	Description
TERM_ID	CHAR	36	The term object ID, a unique identifier generated for the term.
PLAN_ID	CHAR	36	Reference to the PLAN_ID column of the SEP_PLAN table to which this term belongs.
GROUP_ID	CHAR	36	The root group for requirements in this term. All requirements must be part of a group, and there is one group that is at the top of the hierarchy.
TERM	VARCHAR	8	A coded value from UCX_STU016 representing the term associated with all the requirements contained within.
OFFICIAL_TRACKING_STATUS	VARCHAR	12	The official tracking status for the term. One of the following: ONTRACK – Term is on track to completion. OFFTRACK – Term is not on track to completion.

			NOTEVALUATED – Tracking status of the term has not yet been evaluated.
UNOFFICIAL_TRACKING_STATUS	VARCHAR	12	The unofficial tracking status for the term. One of the following: ONTRACK – Term is on track to completion. OFFTRACK – Term is not on track to completion. NOTEVALUATED – Tracking status of the term has not yet been evaluated.
IS_TRACKING_STATUS_CURRENT	CHAR	1	“Y” or “N”. Indicates whether or not any changes have been made to the term since the tracking status was last calculated.
MODIFY_WHO	VARCHAR	30	The ID of the user who last modified the term.
MODIFY_DATE	TIMESTAMP	7	The date and time the term was last modified.
MODIFY_WHAT	VARCHAR	30	The process that last modified the term.
CREATE_WHO	VARCHAR	30	The ID of the user who created the term.
CREATE_DATE	TIMESTAMP	7	The date the term was created.
CREATE_WHAT	VARCHAR	30	The process that created the term.

SEP_PLAN_TERM_NOTE

Contains notes related to a plan term. There may be an unlimited number of notes. It is linked to the SEP_PLAN_TERM table via the TERM_ID column.

Item Name	Data Type	Maximum Size	Description
TERM_NOTE_ID	CHAR	36	The note object ID, a unique identifier generated for the note.
TERM_ID	CHAR	36	Reference to the TERM_ID column of the SEP_PLAN_TERM table to which this note belongs.
NOTE_TEXT	CLOB	unlimited	The text of the note.
AUTHOR	VARCHAR	10	The user ID of the note’s author.
SEQUENCE	DECIMAL	6	A number that records the order in which the user placed the note.
INTERNAL	CHAR	1	“Y” or “N” indicating whether or not the note has restricted visibility.
COPIED_FROM_TEMPLATE	CHAR	1	“Y” or “N” indicating whether or not the note was originally copied from a template.
MODIFY_WHO	VARCHAR	30	The ID of the user who last modified the note.
MODIFY_DATE	TIMESTAMP	7	The date and time the note was last modified.
MODIFY_WHAT	VARCHAR	30	The process that last modified the note.
CREATE_WHO	VARCHAR	30	The ID of the user who created the note.
CREATE_DATE	TIMESTAMP	7	The date the note was created.
CREATE_WHAT	VARCHAR	30	The process that created the note.

SEP_PLAN_GROUP

Item Name	Data Type	Maximum Size	Description
GROUP_ID	CHAR	36	The group object ID, a unique identifier generated for the group.
TERM_ID	CHAR	36	Reference to the TERM_ID column of the SEP_PLAN_TERM table to which this group belongs.
GROUP_TYPE	VARCHAR	2	A coded value representing the type of group. One of the following: UN – Union. All contained requirements must be fulfilled. CH – Choice. One of the contained requirements must be fulfilled.
GROUP_ID_PARENT	CHAR	36	The parent group of this group. For the root group, this element will be the same as the GROUP_ID.
SEQUENCE	DECIMAL	6	A number that records the order in which the user placed the group within the parent group together with other requirements.
IS_CRITICAL	CHAR	1	“Y” or “N”, indicating whether or not this group is critical for tracking purposes.
IS_HONORS	CHAR	1	“Y” or “N”, indicating whether or not the courses in this group must be taken for honors.
IS_GROUP_SELECTION	CHAR	1	“Y” if the student has selected this group out of a choice of requirements. “N” if the student has not selected this group out of a choice of requirements. “null” if the student has made no choice.
REQUIRED_TERM	VARCHAR	8	Not used at this time.
CAMPUS	CHAR	2	A coded value from UCX_STU576 representing the campus where the student plans to take the courses listed in this group. E.g. MA - Main.
DELIVERY	VARCHAR	10	A coded value from UCX_SEP003 representing the method of coursework delivery for the courses listed in this group. E.g. SELF – Self-paced course.
CREDITS	DECIMAL	6,3	The minimum total number of credits for all the courses in this group. Contains 3 whole digits and 3 decimal digits.
MINIMUM_GRADE	VARCHAR	6	The minimum grade that every course in this group must meet in order to fulfill the requirement.
TRACKING_STATUS	VARCHAR	12	The tracking status for the group. One of the following: ONTRACK – Group is on track to completion. OFFTRACK – Group is not on track to completion. NOTEVALUATED – Tracking status of the group has not yet been evaluated.
SCRIBE_POINTER	VARCHAR	12	A coded value from UCX_SEP009 representing the audit requirement as written in Scribe that this group will fulfill.
MODIFY_WHO	VARCHAR	30	The ID of the user who last modified the group.
MODIFY_DATE	TIMESTAMP	7	The date and time the group was last modified.
MODIFY_WHAT	VARCHAR	30	The process that last modified the group.
CREATE_WHO	VARCHAR	30	The ID of the user who created the group.
CREATE_DATE	TIMESTAMP	7	The date the group was created.

CREATE_WHAT	VARCHAR	30	The process that created the group.
-------------	---------	----	-------------------------------------

SEP_PLAN_GROUP_NOTE

Contains notes related to a plan group. There may be an unlimited number of notes. It is linked to the SEP_PLAN_GROUP table via the GROUP_ID column.

Item Name	Data Type	Maximum Size	Description
GROUP_NOTE_ID	CHAR	36	The note object ID, a unique identifier generated for the note.
GROUP_ID	CHAR	36	Reference to the GROUP_ID column of the SEP_PLAN_GROUP table to which this note belongs.
NOTE_TEXT	CLOB	unlimited	The text of the note.
AUTHOR	VARCHAR	10	The user ID of the note's author.
SEQUENCE	DECIMAL	6	A number that records the order in which the user placed the note.
INTERNAL	CHAR	1	"Y" or "N" indicating whether or not the note has restricted visibility.
COPIED_FROM_TEMPLATE	CHAR	1	"Y" or "N" indicating whether or not the note was originally copied from a template.
MODIFY_WHO	VARCHAR	30	The ID of the user who last modified the note.
MODIFY_DATE	TIMESTAMP	7	The date and time the note was last modified.
MODIFY_WHAT	VARCHAR	30	The process that last modified the note.
CREATE_WHO	VARCHAR	30	The ID of the user who created the note.
CREATE_DATE	TIMESTAMP	7	The date the note was created.
CREATE_WHAT	VARCHAR	30	The process that created the note.

SEP_PLAN_GPA

This table records GPA requirements. This means that the student plans to achieve an overall, major, or class list GPA of at least a certain level. There may be an unlimited number of requirements. It is linked to the SEP_PLAN_GROUP table via the GROUP_ID column.

Item Name	Data Type	Maximum Size	Description
GPA_ID	CHAR	36	The GPA requirement object ID, a unique identifier generated for the GPA requirement.
IS_CRITICAL	CHAR	1	"Y" or "N", indicating whether or not this requirement is critical for tracking purposes.
GPA_TYPE	VARCHAR	10	A coded value from UCX_SEP008 representing the type of GPA being required. E.g. MAJOR - Major GPA
MINIMUM_GPA	DECIMAL	23,9	The minimum GPA expected. Contains a maximum of 14 whole digits and 9 decimal digits.
GROUP_ID	CHAR	36	Reference to the GROUP_ID column of the SEP_PLAN_GROUP table to which this requirement belongs.
SEQUENCE	DECIMAL	6	A number that records the order in which the student placed the requirement within its parent group.
TRACKING_STATUS	VARCHAR	12	The tracking status for the requirement. One of the following:

			ONTRACK – Requirement is on track to completion. OFFTRACK – Requirement is not on track to completion. NOTEVALUATED – Tracking status of the requirement has not yet been evaluated.
GPA_CODE	VARCHAR	12	A coded value from UCX_STU023 representing the major associated with this GPA requirement, only if the GpaType is "MAJOR". E.g. ARTH - Art History.
CLASS_LIST	VARCHAR	4000	A list of classes used to evaluate the GPA when the GpaType is "CLASS". E.g. MATH 101 + MATH 102.
CALCULATED_GPA	DECIMAL	23.9	The actual GPA as calculated by the tracking software. Contains a maximum of 14 whole digits and 9 decimal digits.
MODIFY_WHO	VARCHAR	30	The ID of the user who last modified the requirement.
MODIFY_DATE	TIMESTAMP	7	The date and time the requirement was last modified.
MODIFY_WHAT	VARCHAR	30	The process that last modified the requirement.
CREATE_WHO	VARCHAR	30	The ID of the user who created the requirement.
CREATE_DATE	TIMESTAMP	7	The date the requirement was created.
CREATE_WHAT	VARCHAR	30	The process that created the requirement.

SEP_PLAN_GPA_NOTE

Contains notes related to a plan GPA requirement. There may be an unlimited number of notes. It is linked to the SEP_PLAN_GPA table via the GPA_ID column.

Item Name	Data Type	Maximum Size	Description
GPA_NOTE_ID	CHAR	36	The note object ID, a unique identifier generated for the note.
GPA_ID	CHAR	36	Reference to the GPA_ID column of the SEP_PLAN_GPA table to which this note belongs.
NOTE_TEXT	CLOB	unlimited	The text of the note.
AUTHOR	VARCHAR	10	The user ID of the note's author.
SEQUENCE	DECIMAL	6	A number that records the order in which the user placed the note.
INTERNAL	CHAR	1	"Y" or "N" indicating whether or not the note has restricted visibility.
COPIED_FROM_TEMPLATE	CHAR	1	"Y" or "N" indicating whether or not the note was originally copied from a template.
MODIFY_WHO	VARCHAR	30	The ID of the user who last modified the note.
MODIFY_DATE	TIMESTAMP	7	The date and time the note was last modified.
MODIFY_WHAT	VARCHAR	30	The process that last modified the note.
CREATE_WHO	VARCHAR	30	The ID of the user who created the note.
CREATE_DATE	TIMESTAMP	7	The date the note was created.
CREATE_WHAT	VARCHAR	30	The process that created the note.

SEP_PLAN_CLASS

This table records Course requirements. These are planned courses a student expects to take. There may be an unlimited number of requirements. It is linked to the SEP_PLAN_GROUP table via the GROUP_ID column.

Item Name	Data Type	Maximum Size	Description
CLASS_ID	CHAR	36	The course requirement object ID, a unique identifier generated for the requirement.
IS_CRITICAL	CHAR	1	"Y" or "N", indicating whether or not this requirement is critical for tracking purposes.
IS_HONORS	CHAR	1	"Y" or "N", indicating whether or not the courses in this group must be taken for honors.
IS_GROUP_SELECTION	CHAR	1	"Y" if the student has selected this requirement out of a choice of requirements. "N" if the student has not selected this requirement out of a choice of requirements. "null" if the student has made no choice.
REQUIRED_TERM	VARCHAR	8	Not used at this time.
COURSE_DISCIPLINE	VARCHAR	12	The course discipline. E.g. "MATH". Forms the first part of the course identifier (e.g. "MATH 101").
COURSE_NUMBER	VARCHAR	12	The course number. E.g. "101". Forms the second part of the course identifier (e.g. "MATH 101").
COURSE_ATTRIBUTE	VARCHAR	12	A coded value from UCX_STU050 representing an attribute that might be attached to the course. E.g. MAJORONLY - Major Only.
CAMPUS	CHAR	2	A coded value from UCX_STU576 representing the campus where the student plans to take the courses listed in this group. E.g. MA - Main.
DELIVERY	VARCHAR	10	A coded value from UCX_SEP003 representing the method of coursework delivery for the courses listed in this group. E.g. SELF – Self-paced course.
CREDITS	DECIMAL	6,3	The minimum total number of credits for all the courses in this group. Contains 3 whole digits and 3 decimal digits.
MINIMUM_GRADE	VARCHAR	6	The minimum grade that every course in this group must meet in order to fulfill the requirement.
GROUP_ID	CHAR	36	Reference to the GROUP_ID column of the SEP_PLAN_GROUP table to which this requirement belongs.
SEQUENCE	DECIMAL	6	A number that records the order in which the student placed the requirement within its parent group.
TRACKING_STATUS	VARCHAR	12	The tracking status for the group. One of the following: ONTRACK – Group is on track to completion. OFFTRACK – Group is not on track to completion. NOTEVALUATED – Tracking status of the group has not yet been evaluated.
MODIFY_WHO	VARCHAR	30	The ID of the user who last modified the requirement.
MODIFY_DATE	TIMESTAMP	7	The date and time the requirement was last modified.
MODIFY_WHAT	VARCHAR	30	The process that last modified the requirement.
CREATE_WHO	VARCHAR	30	The ID of the user who created the requirement.

CREATE_DATE	TIMESTAMP	7	The date the requirement was created.
CREATE_WHAT	VARCHAR	30	The process that created the requirement.

SEP_PLAN_CLASS_NOTE

Contains notes related to a plan class requirement. There may be an unlimited number of notes. It is linked to the SEP_PLAN_CLASS table via the CLASS_ID column.

Item Name	Data Type	Maximum Size	Description
CLASS_NOTE_ID	CHAR	36	The note object ID, a unique identifier generated for the note.
CLASS_ID	CHAR	36	Reference to the CLASS_ID column of the SEP_PLAN_CLASS table to which this note belongs.
NOTE_TEXT	CLOB	unlimited	The text of the note.
AUTHOR	VARCHAR	10	The user ID of the note's author.
SEQUENCE	DECIMAL	6	A number that records the order in which the user placed the note.
INTERNAL	CHAR	1	"Y" or "N" indicating whether or not the note has restricted visibility.
COPIED_FROM_TEMPLATE	CHAR	1	"Y" or "N" indicating whether or not the note was originally copied from a template.
MODIFY_WHO	VARCHAR	30	The ID of the user who last modified the note.
MODIFY_DATE	TIMESTAMP	7	The date and time the note was last modified.
MODIFY_WHAT	VARCHAR	30	The process that last modified the note.
CREATE_WHO	VARCHAR	30	The ID of the user who created the note.
CREATE_DATE	TIMESTAMP	7	The date the note was created.
CREATE_WHAT	VARCHAR	30	The process that created the note.

SEP_PLAN_TEST

This table records test requirements. This means the student is intending to pass a certain test (e.g. English Composition) with a minimum grade. There may be an unlimited number of requirements. It is linked to the SEP_PLAN_GROUP table via the GROUP_ID column.

Item Name		Maximum Size	Description
TEST_ID	CHAR	36	The test requirement object ID, a unique identifier generated for this requirement.
IS_CRITICAL	CHAR	1	"Y" or "N", indicating whether or not this requirement is critical for tracking purposes.
TEST_CODE	VARCHAR	10	A coded value from UCX_SEP006 representing the type of test being required. E.g. ALEV_CHEM - A-Level Chemistry.
MINIMUM_SCORE	VARCHAR	6	The minimum test score expected.
GROUP_ID	CHAR	36	Reference to the GROUP_ID column of the SEP_PLAN_GROUP table to which this requirement belongs.
SEQUENCE	DECIMAL	6	A number that records the order in which the student placed the requirement within its parent group.
TRACKING_STATUS	VARCHAR	12	The tracking status for the group. One of the following:

			ONTRACK – Group is on track to completion. OFFTRACK – Group is not on track to completion. NOTEVALUATED – Tracking status of the group has not yet been evaluated.
MODIFY_WHO	VARCHAR	30	The ID of the user who last modified the requirement.
MODIFY_DATE	TIMESTAMP	7	The date and time the requirement was last modified.
MODIFY_WHAT	VARCHAR	30	The process that last modified the requirement.
CREATE_WHO	VARCHAR	30	The ID of the user who created the requirement.
CREATE_DATE	TIMESTAMP	7	The date the requirement was created.
CREATE_WHAT	VARCHAR	30	The process that created the requirement.

SEP_PLAN_TEST_NOTE

Contains notes related to a plan test requirement. There may be an unlimited number of notes. It is linked to the SEP_PLAN_TEST table via the TEST_ID column.

Item Name	Data Type	Maximum Size	Description
TEST_NOTE_ID	CHAR	36	The note object ID, a unique identifier generated for the note.
TEST_ID	CHAR	36	Reference to the TEST_ID column of the SEP_PLAN_TEST table to which this note belongs.
NOTE_TEXT	CLOB	unlimited	The text of the note.
AUTHOR	VARCHAR	10	The user ID of the note's author.
SEQUENCE	DECIMAL	6	A number that records the order in which the user placed the note.
INTERNAL	CHAR	1	"Y" or "N" indicating whether or not the note has restricted visibility.
COPIED_FROM_TEMPLATE	CHAR	1	"Y" or "N" indicating whether or not the note was originally copied from a template.
MODIFY_WHO	VARCHAR	30	The ID of the user who last modified the note.
MODIFY_DATE	TIMESTAMP	7	The date and time the note was last modified.
MODIFY_WHAT	VARCHAR	30	The process that last modified the note.
CREATE_WHO	VARCHAR	30	The ID of the user who created the note.
CREATE_DATE	TIMESTAMP	7	The date the note was created.
CREATE_WHAT	VARCHAR	30	The process that created the note.

SEP_PLAN_NONCOURSE

This table records non-course requirements. This requirement allows for the inclusion of specific requirements that do not fall in the realm of the previous three types, such as honors paper, or recital. There may be an unlimited number of requirements. It is linked to the SEP_PLAN_GROUP table via the GROUP_ID column.

Item Name	Data Type	Maximum Size	Description
NONCOURSE_ID	CHAR	36	The non-course requirement object ID, a unique identifier generated for this requirement.
IS_CRITICAL	CHAR	1	"Y" or "N", indicating whether or not this requirement is critical for tracking purposes.
NONCOURSE_CODE	VARCHAR	12	A coded value from UCX_SCR003 representing the type of non-course requirement. E.g. PIANO - Piano recital.
NONCOURSE_SCORE	VARCHAR	12	An optional score or status code, if applicable for the type of non-course requirement.
GROUP_ID	CHAR	36	Reference to the GROUP_ID column of the SEP_PLAN_GROUP table to which this requirement belongs.
SEQUENCE	DECIMAL	6	A number that records the order in which the student placed the requirement within its parent group.
TRACKING_STATUS	VARCHAR	12	The tracking status for the group. One of the following: ONTRACK – Group is on track to completion. OFFTRACK – Group is not on track to completion. NOTEVALUATED – Tracking status of the group has not yet been evaluated.
MODIFY_WHO	VARCHAR	30	The ID of the user who last modified the requirement.
MODIFY_DATE	TIMESTAMP	7	The date and time the requirement was last modified.
MODIFY_WHAT	VARCHAR	30	The process that last modified the requirement.
CREATE_WHO	VARCHAR	30	The ID of the user who created the requirement.
CREATE_DATE	TIMESTAMP	7	The date the requirement was created.
CREATE_WHAT	VARCHAR	30	The process that created the requirement.

SEP_PLAN_NONCOURSE_NOTE

Contains notes related to a plan non-course requirement. There may be an unlimited number of notes. It is linked to the SEP_PLAN_NONCOURSE table via the NONCOURSE_ID column.

Item Name	Data Type	Maximum Size	Description
NONCOURSE_NOTE_ID	CHAR	36	The note object ID, a unique identifier generated for the note.
NONCOURSE_ID	CHAR	36	Reference to the NONCOURSE_ID column of the SEP_PLAN_NONCOURSE table to which this note belongs.
NOTE_TEXT	CLOB	unlimited	The text of the note.
AUTHOR	VARCHAR	10	The user ID of the note's author.
SEQUENCE	DECIMAL	6	A number that records the order in which the user placed the note.

INTERNAL	CHAR	1	"Y" or "N" indicating whether or not the note has restricted visibility.
COPIED_FROM_TEMPLATE	CHAR	1	"Y" or "N" indicating whether or not the note was originally copied from a template.
MODIFY_WHO	VARCHAR	30	The ID of the user who last modified the note.
MODIFY_DATE	TIMESTAMP	7	The date and time the note was last modified.
MODIFY_WHAT	VARCHAR	30	The process that last modified the note.
CREATE_WHO	VARCHAR	30	The ID of the user who created the note.
CREATE_DATE	TIMESTAMP	7	The date the note was created.
CREATE_WHAT	VARCHAR	30	The process that created the note.

SEP_PLAN_PLACEHOLDER

This table records placeholder requirements. These are catch all requirements that accepts any free-form requirement the student or advisor may wish to place on the plan. Unlike the previous requirements, placeholder requirements cannot be represented in Scribe, so cannot be checked by an audit, and cannot be tracked. There may be an unlimited number of requirements. It is linked to the SEP_PLAN_GROUP table via the GROUP_ID column.

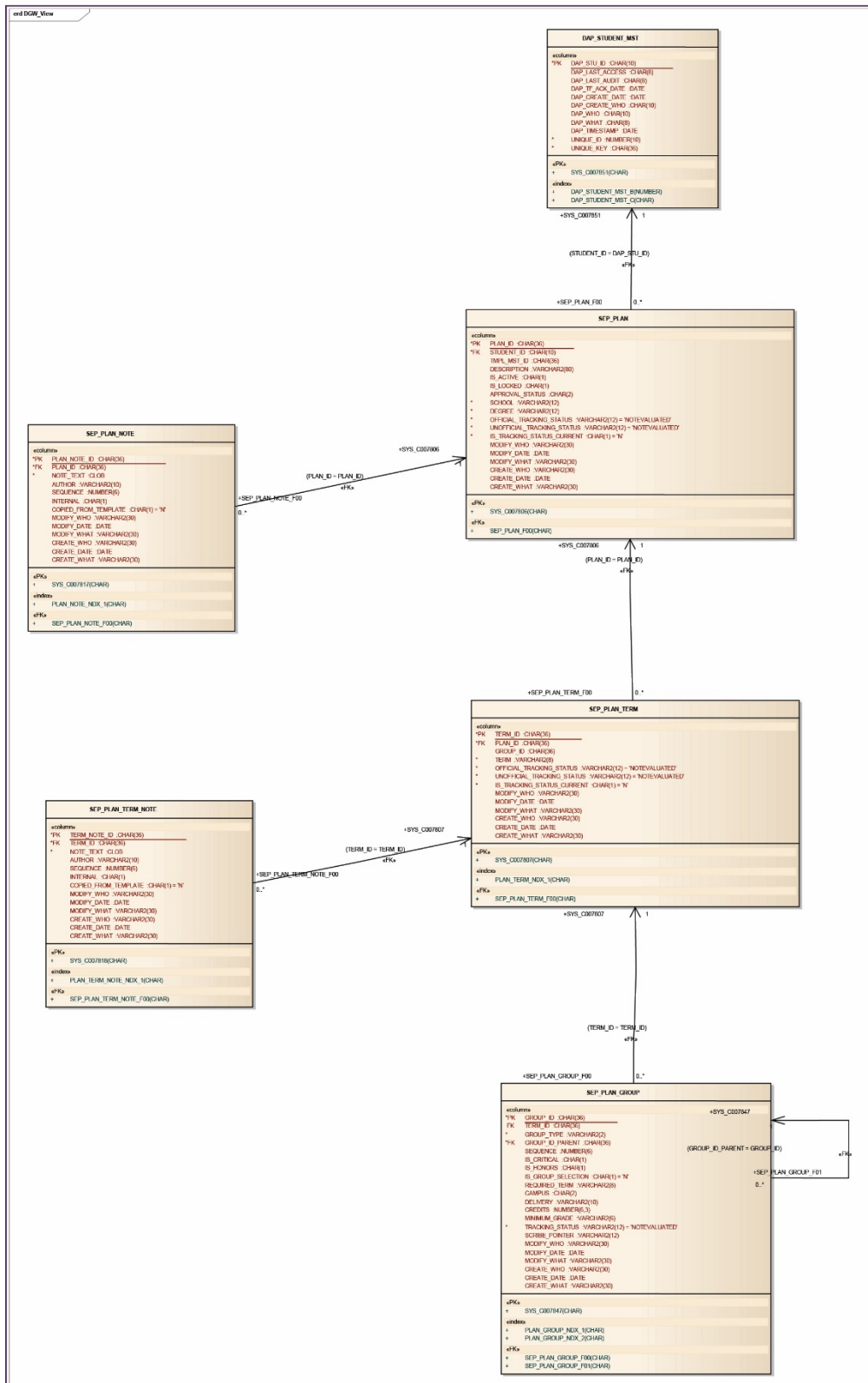
Item Name	Data Types	Maximum Size	Description
PLACEHOLDER_ID	CHAR	36	The placeholder requirement object ID, a unique identifier generated for this requirement.
GROUP_ID	CHAR	36	Reference to the GROUP_ID column of the SEP_PLAN_GROUP table to which this requirement belongs.
PLACEHOLDER_TYPE	VARCHAR	12	A coded value from UCX_SEP005 representing the type of placeholder requirement. E.g. FORLANG – Foreign Language.
PLACEHOLDER_VALUE	VARCHAR	50	Free-form text describing the requirement.
SEQUENCE	DECIMAL	6	A number that records the order in which the student placed the requirement within its parent group.
MODIFY_WHO	VARCHAR	30	The ID of the user who last modified the requirement.
MODIFY_DATE	TIMESTAMP	7	The date and time the requirement was last modified.
MODIFY_WHAT	VARCHAR	30	The process that last modified the requirement.
CREATE_WHO	VARCHAR	30	The ID of the user who created the requirement.
CREATE_DATE	TIMESTAMP	7	The date the requirement was created.
CREATE_WHAT	VARCHAR	30	The process that created the requirement.

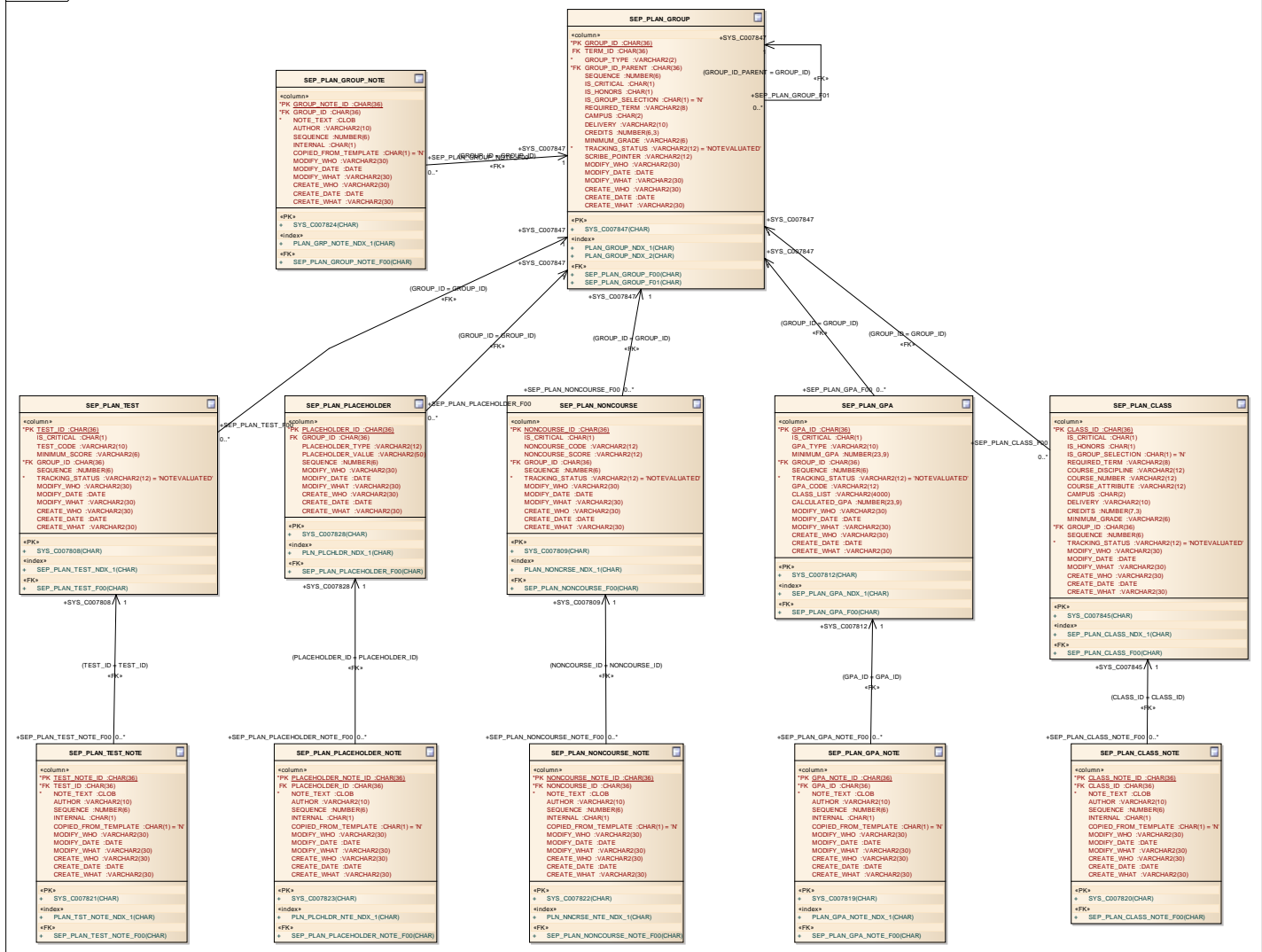
SEP_PLAN_PLACEHOLDER_NOTE

Contains notes related to a plan placeholder requirement. There may be an unlimited number of notes. It is linked to the SEP_PLAN_PLACEHOLDER table via the PLACEHOLDER_ID column.

Item Name	Data Type	Maximum Size	Description
PLACEHOLDER_NOTE_ID	CHAR	36	The note object ID, a unique identifier generated for the note.
PLACEHOLDER_ID	CHAR	36	Reference to the PLACEHOLDER_ID column of the SEP_PLAN_PLACEHOLDER table to which this note belongs.
NOTE_TEXT	CLOB	unlimited	The text of the note.
AUTHOR	VARCHAR	10	The user ID of the note's author.
SEQUENCE	DECIMAL	6	A number that records the order in which the user placed the note.
INTERNAL	CHAR	1	"Y" or "N" indicating whether or not the note has restricted visibility.
COPIED_FROM_TEMPLATE	CHAR	1	"Y" or "N" indicating whether or not the note was originally copied from a template.
MODIFY_WHO	VARCHAR	30	The ID of the user who last modified the note.
MODIFY_DATE	TIMESTAMP	7	The date and time the note was last modified.
MODIFY_WHAT	VARCHAR	30	The process that last modified the note.
CREATE_WHO	VARCHAR	30	The ID of the user who created the note.
CREATE_DATE	TIMESTAMP	7	The date the note was created.
CREATE_WHAT	VARCHAR	30	The process that created the note.

Plan Entity Relation Diagram





Template Data Structures

The template data structures are very similar to those for the plans. It lacks several of the items in the plans and adds a few others.

Template Data Definitions

SEP_TMPL_MST

This is the overall parent table for a template. There is one and only one entry in this table for every template.

Item Name	Data Type	Maximum Size	Description
TMPL_MST_ID	CHAR	36	The template object ID, a unique identifier for the plan. It is generated by the system and generally not seen by users.
TEMPLATE_ID	CHAR	8	A convenient ID that is created by the user.
DESCRIPTION	VARCHAR	80	A free-format description of the template.
IS_ACTIVE	CHAR	1	"Y" or "N", indicating whether or not this is an active template.
TERM_SCHEME	VARCHAR	27	A coded value defined in UCX_SEP002. It defines a typical term sequence that should be used as the basis for a plan created by the template.
MODIFY_WHO	VARCHAR	30	The ID of the user who last modified the template.
MODIFY_DATE	TIMESTAMP	7	The date and time the template was last modified.
MODIFY_WHAT	VARCHAR	30	The process that last modified the template.
CREATE_WHO	VARCHAR	30	The ID of the user who created the template.
CREATE_DATE	TIMESTAMP	7	The date the template was created.
CREATE_WHAT	VARCHAR	30	The process that created the template.

SEP_TMPL_NOTE

Contains notes related to the overall template. There may be an unlimited number of notes tied to a template. It is linked to the SEP_TMPL_MST table via the TMPL_MST_ID column.

Item Name	Data Type	Maximum Size	Description
TMPL_NOTE_ID	CHAR	36	The note object ID, a unique identifier generated for the note.
TMPL_MST_ID	CHAR	36	Reference to the TMPL_MST_ID column of the SEP_TMPL_MST table to which this note belongs.
NOTE_TEXT	CLOB	unlimited	The text of the note.
AUTHOR	VARCHAR	10	The user ID of the note's author.
SEQUENCE	DECIMAL	6	A number that records the order in which the user placed the note.
COPY_TO_PLAN	CHAR	1	"Y" or "N" indicating whether or not the note should be

			copied to plans created from this template.
INTERNAL_ON_PLAN	CHAR	1	“Y” or “N” indicating whether or not the note has restricted visibility after it is copied to a plan created from this template.
MODIFY_WHO	VARCHAR	30	The ID of the user who last modified the plan.
MODIFY_DATE	TIMESTAMP	7	The date and time the plan was last modified.
MODIFY_WHAT	VARCHAR	30	The process that last modified the plan.
CREATE_WHO	VARCHAR	30	The ID of the user who created the plan.
CREATE_DATE	TIMESTAMP	7	The date the plan was created.
CREATE_WHAT	VARCHAR	30	The process that created the plan.

SEP_TMPL_TAG

This table records information used to organize templates. They are used when displaying templates in the Tree View as well as when creating plans for student in batch mode (DAP54). It is linked to the SEP_TMPL_MST table via the TMPL_MST_ID column.

Item Name	Data Type	Maximum Size	Description
TAG_ID	CHAR	36	The tag object ID, a unique identifier for the tag.
TMPL_MST_ID	CHAR	36	Reference to the TMPL_MST_ID column of the SEP_TMPL_MST table to which this tag belongs.
TAG_CODE	VARCHAR	12	A coded value from UCX_SEP001 representing the type of tag associated with the template. E.g. “DEGREE” for degree codes.
TAG_VALUE	VARCHAR	12	A coded value from one of several UCX tables depending on the code recorded in TAG_CODE. It represents the tag value associated with the TAG_CODE. E.g. “BA” for Bachelor of Arts associated with the “DEGREE” tag code.
MODIFY_WHO	VARCHAR	30	The ID of the user who last modified the tag.
MODIFY_DATE	TIMESTAMP	7	The date and time the tag was last modified.
MODIFY_WHAT	VARCHAR	30	The process that last modified the tag.
CREATE_WHO	VARCHAR	30	The ID of the user who created the tag.
CREATE_DATE	TIMESTAMP	7	The date the tag was created.
CREATE_WHAT	VARCHAR	30	The process that created the tag.

SEP_TMPL_TERM

This table records information about the term in which the requirements reside. There is one entry in this table for every term that contains requirements. It is linked to the SEP_TMPL_MST table via the TMPL_MST_ID column.

Item Name	Data Type	Maximum Size	Description
TERM_ID	CHAR	36	The term object ID, a unique identifier for the term.
TMPL_MST_ID	CHAR	36	Reference to the TMPL_MST_ID column of the SEP_TMPL_MST table to which this term belongs.
GROUP_ID	CHAR	36	The root group for requirements in this term. All requirements must be part of a group, and there is

			one group that is at the top of the hierarchy.
TERM_SEQ	DECIMAL	6	A number that order of the term within the plan.
DESCRIPTION	VARCHAR	80	A description for the term. This is initially set from UCX_SEP002.
MODIFY_WHO	VARCHAR	30	The ID of the user who last modified the term.
MODIFY_DATE	TIMESTAMP	7	The date and time the term was last modified.
MODIFY_WHAT	VARCHAR	30	The process that last modified the term.
CREATE_WHO	VARCHAR	30	The ID of the user who created the term.
CREATE_DATE	TIMESTAMP	7	The date the term was created.
CREATE_WHAT	VARCHAR	30	The process that created the term.

SEP_TMPL_TERM_NOTE

Contains notes related to a template term. There may be an unlimited number of notes. It is linked to the SEP_TMPL_TERM table via the TERM_ID column.

Item Name	Data Type	Maximum Size	Description
TERM_NOTE_ID	CHAR	36	The note object ID, a unique identifier generated for the note.
TERM_ID	CHAR	36	Reference to the TERM_ID column of the SEP_TMPL_TERM table to which this note belongs.
NOTE_TEXT	CLOB	unlimited	The text of the note.
AUTHOR	VARCHAR	10	The user ID of the note's author.
SEQUENCE	DECIMAL	6	A number that records the order in which the user placed the note.
COPY_TO_PLAN	CHAR	1	"Y" or "N" indicating whether or not the note should be copied to plans created from this template.
INTERNAL_ON_PLAN	CHAR	1	"Y" or "N" indicating whether or not the note has restricted visibility after it is copied to a plan created from this template.
MODIFY_WHO	VARCHAR	30	The ID of the user who last modified the note.
MODIFY_DATE	TIMESTAMP	7	The date and time the note was last modified.
MODIFY_WHAT	VARCHAR	30	The process that last modified the note.
CREATE_WHO	VARCHAR	30	The ID of the user who created the note.
CREATE_DATE	TIMESTAMP	7	The date the note was created.
CREATE_WHAT	VARCHAR	30	The process that created the note.

SEP_TMPL_GROUP

This table organizes and contains requirements. All requirements link to this table. It is linked to the SEP_TMPL_TERM table via the TERM_ID column.

Item Name	Data Type	Maximum Size	Description
GROUP_ID	CHAR	36	The group object ID, a unique identifier generated for the group.
TERM_ID	CHAR	36	Reference to the TERM_ID column of the SEP_TMPL_TERM table to which this group belongs.
GROUP_ID_PARENT	CHAR	36	The parent group of this group. For the root group, this element will be the same as the GROUP_ID.
GROUP_TYPE	VARCHAR	2	A coded value representing the type of group. One of the following: UN – Union. All contained requirements must be fulfilled. CH – Choice. One of the contained requirements must be fulfilled.
SEQUENCE	DECIMAL	6	A number that records the order in which the user placed the group within the parent group together with other requirements.
IS_CRITICAL	CHAR	1	"Y" or "N", indicating whether or not this group is critical for tracking purposes.
REQUIRED_TERM	VARCHAR	8	Not used at this time.
CAMPUS	CHAR	2	A coded value from UCX_STU576 representing the campus where the student plans to take the courses listed in this group. E.g. MA - Main.
DELIVERY	VARCHAR	10	A coded value from UCX_SEP003 representing the method of coursework delivery for the courses listed in this group. E.g. SELF – Self-paced course.
CREDITS	DECIMAL	6,3	The minimum total number of credits for all the courses in this group. Contains 3 whole digits and 3 decimal digits.
MINIMUM_GRADE	VARCHAR	6	The minimum grade that every course in this group must meet in order to fulfill the requirement.
SCRIBE_POINTER	VARCHAR	12	A coded value from UCX_SEP009 representing the audit requirement as written in Scribe that this group will fulfill.
MODIFY_WHO	VARCHAR	30	The ID of the user who last modified the group.
MODIFY_DATE	TIMESTAMP	7	The date and time the group was last modified.
MODIFY_WHAT	VARCHAR	30	The process that last modified the group.
CREATE_WHO	VARCHAR	30	The ID of the user who created the group.
CREATE_DATE	TIMESTAMP	7	The date the group was created.
CREATE_WHAT	VARCHAR	30	The process that created the group.

SEP_TMPL_GROUP_NOTE

Contains notes related to a group. There may be an unlimited number of notes. It is linked to the SEP_TMPL_GROUP table via the GROUP_ID column.

Item Name	Data Type	Maximum Size	Description
GROUP_NOTE_ID	CHAR	36	The note object ID, a unique generated identifier for the note.
GROUP_ID	CHAR	36	Reference to the GROUP_ID column of the SEP_TMPL_GROUP table to which this note belongs.
NOTE_TEXT	CLOB	unlimited	The text of the note.
AUTHOR	VARCHAR	10	The user ID of the note's author.
SEQUENCE	DECIMAL	6	A number that records the order in which the user placed the note.
COPY_TO_PLAN	CHAR	1	"Y" or "N" indicating whether or not the note should be copied to plans created from this template.
INTERNAL_ON_PLAN	CHAR	1	"Y" or "N" indicating whether or not the note has restricted visibility after it is copied to a plan created from this template.
MODIFY_WHO	VARCHAR	30	The ID of the user who last modified the note.
MODIFY_DATE	TIMESTAMP	7	The date and time the note was last modified.
MODIFY_WHAT	VARCHAR	30	The process that last modified the note.
CREATE_WHO	VARCHAR	30	The ID of the user who created the note.
CREATE_DATE	TIMESTAMP	7	The date the note was created.
CREATE_WHAT	VARCHAR	30	The process that created the note.

SEP_TMPL_GPA

This table records GPA requirements. This means that the student plans to achieve an overall, major, or class list GPA of at least a certain level. There may be an unlimited number of requirements. It is linked to the SEP_TMPL_GROUP table via the GROUP_ID column.

Item Name	Data Type	Maximum Size	Description
GPA_ID	CHAR	36	The GPA requirement object ID, a unique identifier generated for the GPA requirement.
GROUP_ID	CHAR	36	Reference to the GROUP_ID column of the SEP_TMPL_GROUP table to which this requirement belongs.
IS_CRITICAL	CHAR	1	"Y" or "N", indicating whether or not this requirement is critical for tracking purposes.
GPA_TYPE	VARCHAR	10	A coded value from UCX_SEP008 representing the type of GPA being required. E.g. MAJOR - Major GPA
MINIMUM_GPA	DECIMAL	23,9	The minimum GPA expected. Contains a maximum of 14 whole digits and 9 decimal digits.
SEQUENCE	DECIMAL	6	A number that records the order in which the student placed the requirement within its parent group.
GPA_CODE	VARCHAR	12	A coded value from UCX_STU023 representing the major associated with this GPA requirement, only if the GpaType is

			"MAJOR". E.g. ARTH - Art History.
CLASS_LIST	VARCHAR	4000	A list of classes used to evaluate the GPA when the GpaType is "CLASS". E.g. MATH 101 + MATH 102.
MODIFY_WHO	VARCHAR	30	The ID of the user who last modified the requirement.
MODIFY_DATE	TIMESTAMP	7	The date and time the requirement was last modified.
MODIFY_WHAT	VARCHAR	30	The process that last modified the requirement.
CREATE_WHO	VARCHAR	30	The ID of the user who created the requirement.
CREATE_DATE	TIMESTAMP	7	The date the requirement was created.
CREATE_WHAT	VARCHAR	30	The process that created the requirement.

SEP_TMPL_GPA_NOTE

Contains notes related to a plan GPA requirement. There may be an unlimited number of notes. It is linked to the SEP_TMPL_GPA table via the GPA_ID column.

Item Name	Data Type	Maximum Size	Description
GPA_NOTE_ID	CHAR	36	The note object ID, a unique identifier generated for the note.
GPA_ID	CHAR	36	Reference to the GPA_ID column of the SEP_TMPL_GPA table to which this note belongs.
NOTE_TEXT	CLOB	unlimited	The text of the note.
AUTHOR	VARCHAR	10	The user ID of the note's author.
SEQUENCE	DECIMAL	6	A number that records the order in which the user placed the note.
COPY_TO_PLAN	CHAR	1	"Y" or "N" indicating whether or not the note should be copied to plans created from this template.
INTERNAL_ON_PLAN	CHAR	1	"Y" or "N" indicating whether or not the note has restricted visibility after it is copied to a plan created from this template.
MODIFY_WHO	VARCHAR	30	The ID of the user who last modified the note.
MODIFY_DATE	TIMESTAMP	7	The date and time the note was last modified.
MODIFY_WHAT	VARCHAR	30	The process that last modified the note.
CREATE_WHO	VARCHAR	30	The ID of the user who created the note.
CREATE_DATE	TIMESTAMP	7	The date the note was created.
CREATE_WHAT	VARCHAR	30	The process that created the note.

SEP_TMPL_CLASS

This table records Course requirements. These are planned courses a student expects to take. There may be an unlimited number of requirements. It is linked to the SEP_TMPL_GROUP table via the GROUP_ID column.

Item Name	Data Type	Maximum Size	Description
CLASS_ID	CHAR	36	The course requirement object ID, a unique identifier generated for the requirement.
GROUP_ID	CHAR	36	Reference to the GROUP_ID column of the SEP_TMPL_GROUP table to which this requirement belongs.
IS_CRITICAL	CHAR	1	"Y" or "N", indicating whether or not this requirement is critical for tracking purposes.
REQUIRED_TERM	VARCHAR	8	Not used at this time.
COURSE_DISCIPLINE	VARCHAR	12	The course discipline. E.g. "MATH". Forms the first part of the course identifier (e.g. "MATH 101").
COURSE_NUMBER	VARCHAR	12	The course number. E.g. "101". Forms the second part of the course identifier (e.g. "MATH 101").
COURSE_ATTRIBUTE	VARCHAR	12	A coded value from UCX_STU050 representing an attribute that might be attached to the course. E.g. MAJORONLY - Major Only.
CAMPUS	CHAR	2	A coded value from UCX_STU576 representing the campus where the student plans to take the courses listed in this group. E.g. MA - Main.
DELIVERY	VARCHAR	10	A coded value from UCX_SEP003 representing the method of coursework delivery for the courses listed in this group. E.g. SELF – Self-paced course.
CREDITS	DECIMAL	6,3	The minimum total number of credits for all the courses in this group. Contains 3 whole digits and 3 decimal digits.
MINIMUM_GRADE	VARCHAR	6	The minimum grade that every course in this group must meet in order to fulfill the requirement.
SEQUENCE	DECIMAL	6	A number that records the order in which the student placed the requirement within its parent group.
MODIFY_WHO	VARCHAR	30	The ID of the user who last modified the requirement.
MODIFY_DATE	TIMESTAMP	7	The date and time the requirement was last modified.
MODIFY_WHAT	VARCHAR	30	The process that last modified the requirement.
CREATE_WHO	VARCHAR	30	The ID of the user who created the requirement.
CREATE_DATE	TIMESTAMP	7	The date the requirement was created.
CREATE_WHAT	VARCHAR	30	The process that created the requirement.

SEP_TMPL_CLASS_NOTE

Contains notes related to a plan class requirement. There may be an unlimited number of notes. It is linked to the SEP_TMPL_CLASS table via the CLASS_ID column.

Item Name	Data Type	Maximum Size	Description
CLASS_NOTE_ID	CHAR	36	The note object ID, a unique identifier generated for the note.
CLASS_ID	CHAR	36	Reference to the CLASS_ID column of the SEP_TMPL_CLASS table to which this note belongs.
NOTE_TEXT	CLOB	unlimited	The text of the note.
AUTHOR	VARCHAR	10	The user ID of the note's author.
SEQUENCE	DECIMAL	6	A number that records the order in which the user placed the note.
COPY_TO_PLAN	CHAR	1	"Y" or "N" indicating whether or not the note should be copied to plans created from this template.
INTERNAL_ON_PLAN	CHAR	1	"Y" or "N" indicating whether or not the note has restricted visibility after it is copied to a plan created from this template.
MODIFY_WHO	VARCHAR	30	The ID of the user who last modified the note.
MODIFY_DATE	TIMESTAMP	7	The date and time the note was last modified.
MODIFY_WHAT	VARCHAR	30	The process that last modified the note.
CREATE_WHO	VARCHAR	30	The ID of the user who created the note.
CREATE_DATE	TIMESTAMP	7	The date the note was created.
CREATE_WHAT	VARCHAR	30	The process that created the note.

SEP_TMPL_TEST

This table records test requirements. This means the student is intending to pass a certain test (e.g. English Composition) with a minimum grade. There may be an unlimited number of requirements. It is linked to the SEP_TMPL_GROUP table via the GROUP_ID column.

Item Name		Maximum Size	Description
TEST_ID	CHAR	36	The test requirement object ID, a unique identifier generated for this requirement.
GROUP_ID	CHAR	36	Reference to the GROUP_ID column of the SEP_TMPL_GROUP table to which this requirement belongs.
IS_CRITICAL	CHAR	1	"Y" or "N", indicating whether or not this requirement is critical for tracking purposes.
TEST_CODE	VARCHAR	10	A coded value from UCX_SEP006 representing the type of test being required. E.g. ALEV_CHEM - A-Level Chemistry.
MINIMUM_SCORE	VARCHAR	6	The minimum test score expected.
SEQUENCE	DECIMAL	6	A number that records the order in which the student placed the requirement within its parent group.
MODIFY_WHO	VARCHAR	30	The ID of the user who last modified the requirement.
MODIFY_DATE	TIMESTAMP	7	The date and time the requirement was last modified.

MODIFY_WHAT	VARCHAR	30	The process that last modified the requirement.
CREATE_WHO	VARCHAR	30	The ID of the user who created the requirement.
CREATE_DATE	TIMESTAMP	7	The date the requirement was created.
CREATE_WHAT	VARCHAR	30	The process that created the requirement.

SEP_TMPL_TEST_NOTE

Contains notes related to a plan test requirement. There may be an unlimited number of notes. It is linked to the SEP_TMPL_TEST table via the TEST_ID column.

Item Name	Data Type	Maximum Size	Description
TEST_NOTE_ID	CHAR	36	The note object ID, a unique identifier generated for the note.
TEST_ID	CHAR	36	Reference to the TEST_ID column of the SEP_TMPL_TEST table to which this note belongs.
NOTE_TEXT	CLOB	unlimited	The text of the note.
AUTHOR	VARCHAR	10	The user ID of the note's author.
SEQUENCE	DECIMAL	6	A number that records the order in which the user placed the note.
COPY_TO_PLAN	CHAR	1	"Y" or "N" indicating whether or not the note should be copied to plans created from this template.
INTERNAL_ON_PLAN	CHAR	1	"Y" or "N" indicating whether or not the note has restricted visibility after it is copied to a plan created from this template.
MODIFY_WHO	VARCHAR	30	The ID of the user who last modified the note.
MODIFY_DATE	TIMESTAMP	7	The date and time the note was last modified.
MODIFY_WHAT	VARCHAR	30	The process that last modified the note.
CREATE_WHO	VARCHAR	30	The ID of the user who created the note.
CREATE_DATE	TIMESTAMP	7	The date the note was created.
CREATE_WHAT	VARCHAR	30	The process that created the note.

SEP_TMPL_NONCOURSE

This table records non-course requirements. This requirement allows for the inclusion of specific requirements that do not fall in the realm of the previous three types, such as honors paper, or recital. There may be an unlimited number of requirements. It is linked to the SEP_TMPL_GROUP table via the GROUP_ID column.

Item Name	Data Type	Maximum Size	Description
NONCOURSE_ID	CHAR	36	The non-course requirement object ID, a unique identifier generated for this requirement.
GROUP_ID	CHAR	36	Reference to the GROUP_ID column of the SEP_TMPL_GROUP table to which this requirement belongs.
IS_CRITICAL	CHAR	1	"Y" or "N", indicating whether or not this requirement is critical for tracking purposes.
NONCOURSE_CODE	VARCHAR	12	A coded value from UCX_SCR003 representing the type of non-course requirement. E.g. PIANO - Piano recital.
NONCOURSE_SCORE	VARCHAR	12	An optional score or status code, if applicable for the type of non-course requirement.
SEQUENCE	DECIMAL	6	A number that records the order in which the student placed the requirement within its parent group.
MODIFY_WHO	VARCHAR	30	The ID of the user who last modified the requirement.
MODIFY_DATE	TIMESTAMP	7	The date and time the requirement was last modified.
MODIFY_WHAT	VARCHAR	30	The process that last modified the requirement.
CREATE_WHO	VARCHAR	30	The ID of the user who created the requirement.
CREATE_DATE	TIMESTAMP	7	The date the requirement was created.
CREATE_WHAT	VARCHAR	30	The process that created the requirement.

SEP_TMPL_NONCOURSE_NOTE

Contains notes related to a plan non-course requirement. There may be an unlimited number of notes. It is linked to the SEP_TMPL_NONCOURSE table via the NONCOURSE_ID column.

Item Name	Data Type	Maximum Size	Description
NONCOURSE_NOTE_ID	CHAR	36	The note object ID, a unique identifier generated for the note.
NONCOURSE_ID	CHAR	36	Reference to the NONCOURSE_ID column of the SEP_TMPL_NONCOURSE table to which this note belongs.
NOTE_TEXT	CLOB	unlimited	The text of the note.
AUTHOR	VARCHAR	10	The user ID of the note's author.
SEQUENCE	DECIMAL	6	A number that records the order in which the user placed the note.
COPY_TO_PLAN	CHAR	1	"Y" or "N" indicating whether or not the note should be copied to plans created from this template.
INTERNAL_ON_PLAN	CHAR	1	"Y" or "N" indicating whether or not the note has restricted visibility after it is copied to a plan created from this template.

MODIFY_WHO	VARCHAR	30	The ID of the user who last modified the note.
MODIFY_DATE	TIMESTAMP	7	The date and time the note was last modified.
MODIFY_WHAT	VARCHAR	30	The process that last modified the note.
CREATE_WHO	VARCHAR	30	The ID of the user who created the note.
CREATE_DATE	TIMESTAMP	7	The date the note was created.
CREATE_WHAT	VARCHAR	30	The process that created the note.

SEP_TMPL_PLACEHOLDER

This table records placeholder requirements. These are catch all requirements that accepts any free-form requirement the student or advisor may wish to place on the plan. Unlike the previous requirements, placeholder requirements cannot be represented in Scribe, so cannot be checked by an audit, and cannot be tracked. There may be an unlimited number of requirements. It is linked to the SEP_TMPL_GROUP table via the GROUP_ID column.

Item Name	Data Types	Maximum Size	Description
PLACEHOLDER_ID	CHAR	36	The placeholder requirement object ID, a unique identifier generated for this requirement.
GROUP_ID	CHAR	36	Reference to the GROUP_ID column of the SEP_TMPL_GROUP table to which this requirement belongs.
PLACEHOLDER_TYPE	VARCHAR	12	A coded value from UCX_SEP005 representing the type of placeholder requirement. E.g. FORLANG – Foreign Language.
PLACEHOLDER_VALUE	VARCHAR	50	Free-form text describing the requirement.
SEQUENCE	DECIMAL	6	A number that records the order in which the student placed the requirement within its parent group.
MODIFY_WHO	VARCHAR	30	The ID of the user who last modified the requirement.
MODIFY_DATE	TIMESTAMP	7	The date and time the requirement was last modified.
MODIFY_WHAT	VARCHAR	30	The process that last modified the requirement.
CREATE_WHO	VARCHAR	30	The ID of the user who created the requirement.
CREATE_DATE	TIMESTAMP	7	The date the requirement was created.
CREATE_WHAT	VARCHAR	30	The process that created the requirement.

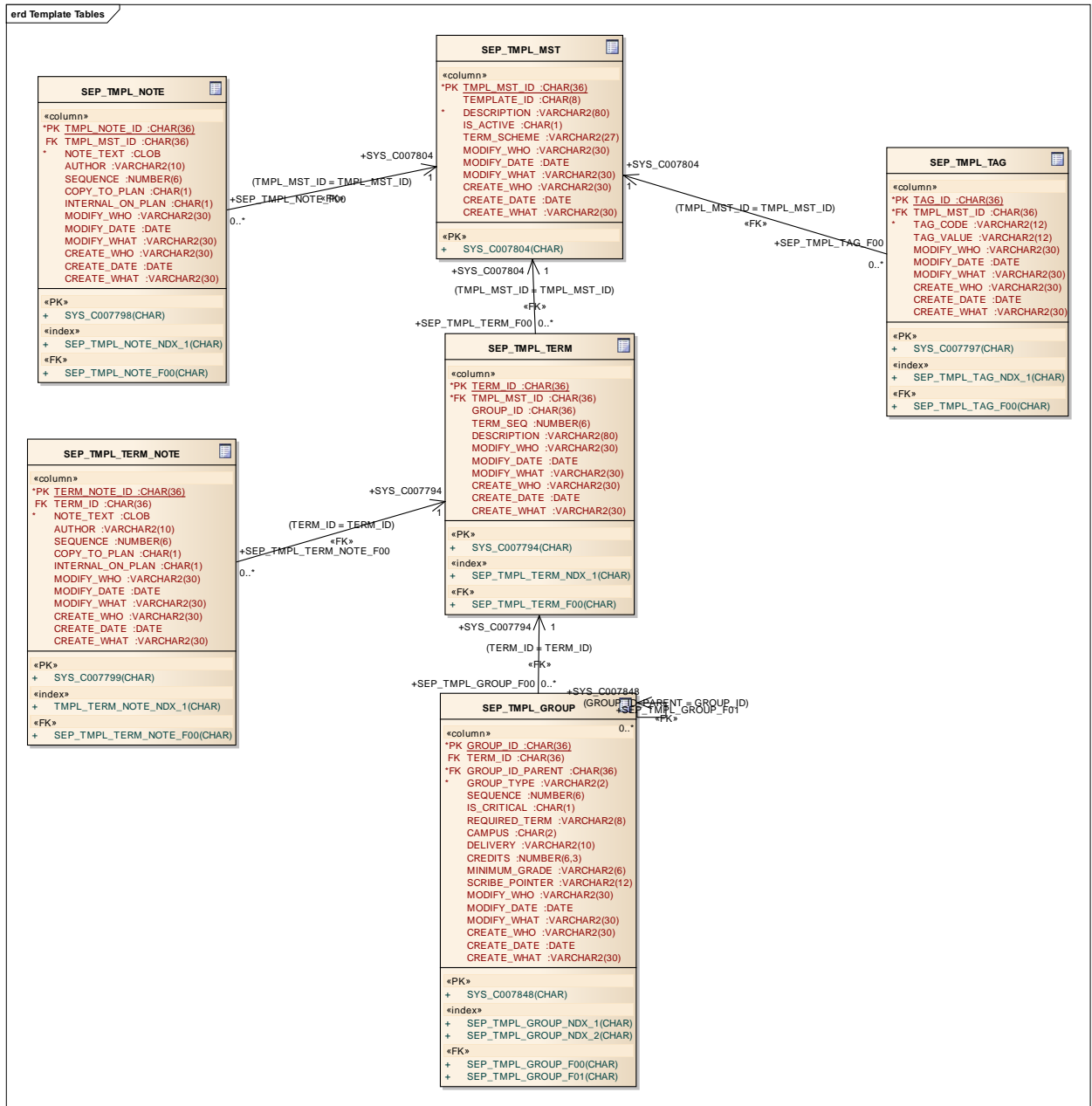
SEP_TMPL_PLACEHOLDER_NOTE

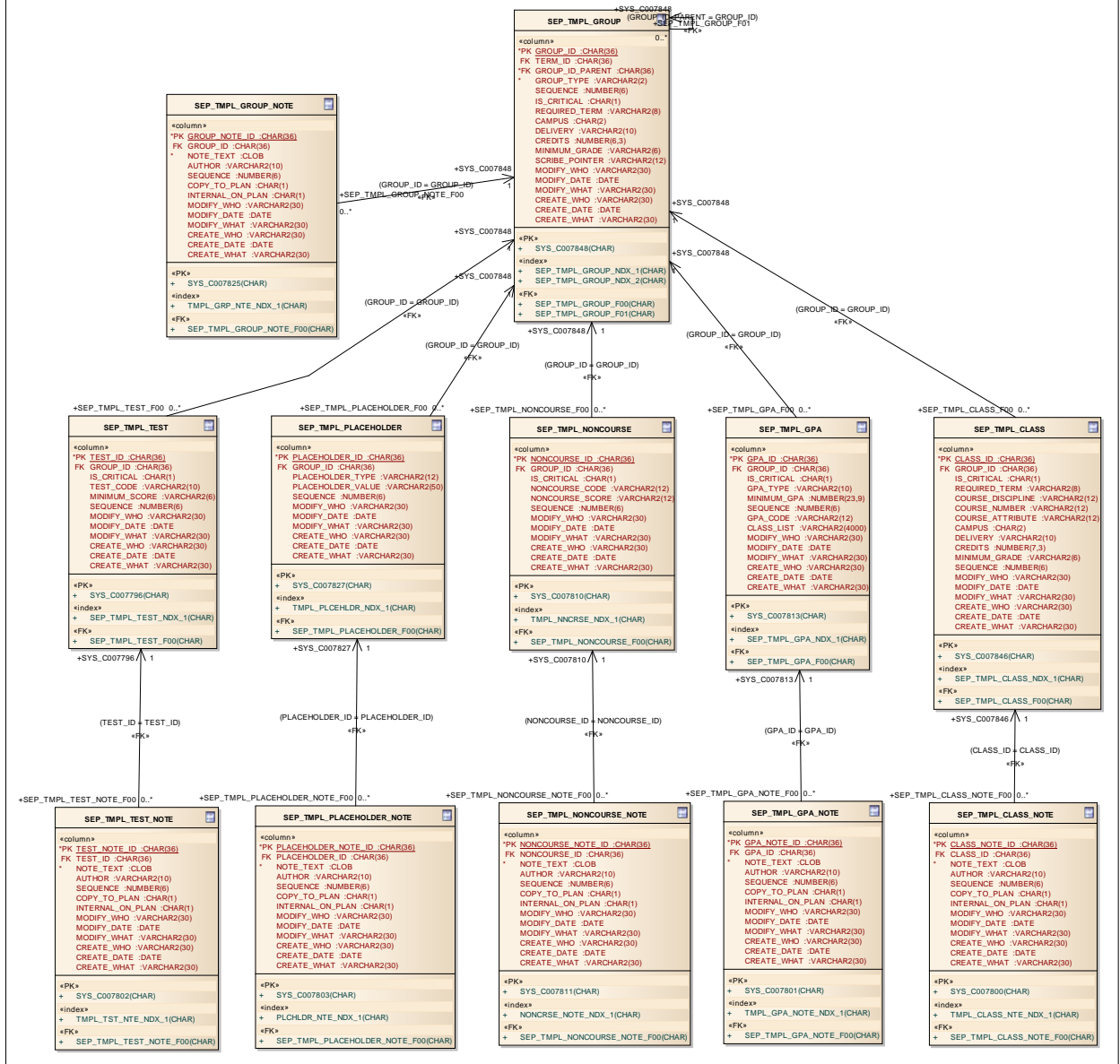
Contains notes related to a plan placeholder requirement. There may be an unlimited number of notes. It is linked to the SEP_TMPL_PLACEHOLDER table via the PLACEHOLDER_ID column.

Item Name	Data Type	Maximum Size	Description
PLACEHOLDER_NOTE_ID	CHAR	36	The note object ID, a unique identifier generated for the note.
PLACEHOLDER_ID	CHAR	36	Reference to the PLACEHOLDER_ID column of the SEP_TMPL_PLACEHOLDER table to which this note belongs.
NOTE_TEXT	CLOB	unlimited	The text of the note.
AUTHOR	VARCHAR	10	The user ID of the note's author.
SEQUENCE	DECIMAL	6	A number that records the order in which the user placed

			the note.
COPY_TO_PLAN	CHAR	1	“Y” or “N” indicating whether or not the note should be copied to plans created from this template.
INTERNAL_ON_PLAN	CHAR	1	“Y” or “N” indicating whether or not the note has restricted visibility after it is copied to a plan created from this template.
MODIFY_WHO	VARCHAR	30	The ID of the user who last modified the note.
MODIFY_DATE	TIMESTAMP	7	The date and time the note was last modified.
MODIFY_WHAT	VARCHAR	30	The process that last modified the note.
CREATE_WHO	VARCHAR	30	The ID of the user who created the note.
CREATE_DATE	TIMESTAMP	7	The date the note was created.
CREATE_WHAT	VARCHAR	30	The process that created the note.

Template Entity Relation Diagram





Requirements

Requirement blocks created by Scribe are saved in the dap_req_block table. All of the tags and text are saved in the one table. The text is saved in a CLOB field so special care is needed if you are to read the contents of that field.

DAP_REQ_BLOCK

Field	Data type	Length	Description
REQUIREMENT_ID	VARCHAR2	8	Requirement block ID. RAnnnnnn for academic blocks and RBnnnnnn for blocks created by the planner.
BLOCK_TYPE	VARCHAR2	12	Type of block. Valid in UCX-SCR004.
BLOCK_VALUE	VARCHAR2	12	Value of the block. Valid in the respective UCX table based on the type. Values for block types of OTHER do not exist in any UCX table and value for block types of ID must be valid on rad_student_mst.rad_id.
TITLE	VARCHAR2	50	The title of the block appearing on worksheets.
PERIOD_START	VARCHAR2	12	The starting catalog year. For REQUISITE blocks this is a starting term.
PERIOD_STOP	VARCHAR2	12	The ending catalog year. For REQUISITE blocks this is an ending term.
SCHOOL	VARCHAR2	12	Optionally the block can be tied to this school. Valid in UCX-STU350.
DEGREE	VARCHAR2	12	Optionally the block can be tied to this degree. Valid in UCX-STU307.
COLLEGE	VARCHAR2	12	Optionally the block can be tied to this college. Valid in UCX-STU560.
MAJOR1	VARCHAR2	12	Optionally the block can be tied to this major. Valid in UCX-STU023.
MAJOR2	VARCHAR2	12	Optionally the block can be tied to this major. Valid in UCX-STU023.
CONCENTRATION	VARCHAR2	12	Optionally the block can be tied to this concentration. Valid in UCX-STU563.
MINOR	VARCHAR2	12	Optionally the block can be tied to this minor. Valid in UCX-STU024.
LIBERAL_LEARNING	VARCHAR2	12	Optionally the block can be tied to this liberal learning. Valid in UCX-STU324.
SPECIALIZATION	VARCHAR2	12	Optionally the block can be tied to this specialization. Valid in UCX-STU323.
PROGRAM	VARCHAR2	12	Optionally the block can be tied to this

			program. Valid in UCX-STU350.
STUDENT_ID	VARCHAR2	10	Optionally the block can be tied to this student ID. Valid on rad_student_mst.rad_id.
PARSE_STATUS	VARCHAR2	2	Valid in UCX-SCR007. OK means the last block parse was successful. NO means the last block parse resulted in errors.
PARSE_DATE	DATE		Date the parse status changed or when changes were made to the block.
PARSE_WHO	VARCHAR2	30	ID of person who changed the block.
PARSE_WHAT	VARCHAR2	30	CONVERSION (from old Scribe) or blank
LOCK_VERSION	NUMBER	18	Used to ensure to users are not modifying the same block at the same time.
REQUIREMENT_TEXT	CLOB		The text of the block saved as a CLOB field. Newline characters separate each line of text.
CREATE_DATE	DATE		The date the block was created.
CREATE_WHO	VARCHAR2	30	The ID of the person who created the block.
CREATE_WHAT	VARCHAR2	30	CONVERSION (from old Scribe) or SCRIBE
MODIFY_DATE	DATE		The date the block was last modified.
MODIFY_WHO	VARCHAR2	30	The ID of the person who last modified the block.
MODIFY_WHAT	VARCHAR2	30	DAP36 or SCRIBE

DAP_REQ_CRS_DTL

When a block is parsed, the courses found in the block are saved to the dap_req_crs_dtl.

Field	Data type	Length	Description
DAP_REQ_ID	CHAR	8	Requirement block ID. Corresponds with dap_req_block.requirement_id.
DAP_DISCIPLINE	CHAR	12	Course discipline as it is scribed. This may contain the wildcard character - @.
DAP_NUMBER_BEGIN	CHAR	12	Course number as it is scribed. This may contain the wildcard character - @. If the course that was scribed is a range this will be the starting course number.
DAP_NUMBER_END	CHAR	12	Ending course number of a range. If the course is not a range this will be blank.

DAP_REQ_LINK_DTL

When a block is parsed, the OTHER blocks that are referenced are saved to the dap_req_crs_dtl. When an audit is run the degree, major, minor, etc blocks are included based on what is on the student's curriculum. For each of these blocks, the links in this table for the OTHER blocks they reference are then processed to know which OTHER blocks need to be included.

Field	Data type	Length	Description
DAP_REQ_ID	CHAR	8	Requirement block ID of the calling block. Corresponds with <code>dap_req_block.requirement_id</code> .
DAP_TYPE_FROM	CHAR	12	Block type of the calling block. Example, DEGREE. Corresponds with <code>dap_req_block.block_type</code> .
DAP_VALUE_FROM	CHAR	12	Block value of the calling block. Example, BS. Corresponds with <code>dap_req_block.block_value</code> .
DAP_TYPE_TO	CHAR	12	Block type of the referenced block. This is always OTHER. (additional values may be in this field but only the OTHER type is actually used) Corresponds with <code>dap_req_block.block_type</code>
DAP_VALUE_TO	CHAR	12	Block value of the referenced block. Example, GENED. Corresponds with <code>dap_req_block.block_value</code>

Exceptions

Exceptions are applied to audits and saved in the `dap_except_dtl` table in the Degree Works database. You may use the Exceptions Report in Exception Management to review these exceptions or you may decide to use your own tools to report against this data.

When an exception is added the node-id of the rule or qualifier on which the exception was placed is saved to the `dap_node_id` field. In addition to the node-id the label tag or qualifier tag is also saved to the `dap_label_tag` field. When subsequent changes are made to the block where the exception was placed are made, the label tag is used to locate the new node-id where the exception should apply. If no label tag exists then the node-id is looked up on the old block and then that location is compared to the same location on the new block to find the new node-id with the help of the label text on the requirement. The bottom line is that without the label or qualifier tag in place the system may not be able to locate the correct requirement when block changes are made in Scribe. Please refer to the Label Tag section in the *Scribe User Guide* for more information.

DAP_EXCEPT_DTL

Field	Data type	Length	Description
DAP_STU_ID	CHAR	10	Student ID
DAP_SCHOOL	CHAR	12	Valid in UCX-STU350. Example: UG. Exceptions may be tied to the school via the UCX-CFG020 EXCEPTIONS Exceptions Tied to School flag.
DAP_DEGREE	CHAR	12	Valid in UCX-STU307. Example: BS. Exceptions may be tied to the degree via the UCX-CFG020 EXCEPTIONS Exceptions Tied to Degree flag.
DAP_EXC_TYPE	CHAR	2	Valid in UCX-AUD014. Example, AH
DAP_EXC_STATUS	CHAR	2	Valid in UCX-AUD015. Example, RG.
DAP_REQ_ID	CHAR	8	Requirement/Block ID where exception is applied. This will be RA000000 if it is global exception, applying to all blocks in the student's audit.
DAP_NODE_ID	NUMBER	6	Points to a particular requirement. Example, 167.
DAP_NODE_TYPE	NUMBER	4	Obsolete
DAP_LABEL_TAG	CHAR	20	Scribed label tag or qualifier tag where exception was placed. Example, CHEMELEC
DAP_EXC_REQ_OLD	CHAR	40	Obsolete
DAP_EXC_CLUSTER	CHAR	4	Obsolete

DAP_EXC_BUFFER	CHAR	80	The course and credit information for the exception. See the section below explaining the layout of this field.
DAP_EXC_LABEL	CHAR	50	Short description of exception.
DAP_EXC_REMARK	CHAR	72	WITH data for the course. See the section below explaining the layout of this field.
DAP_EXC_DETAILS	CHAR	220	Long description of exception often explaining the reason behind the description.
DAP_NOTE_NUM	NUMBER	4	Obsolete
DAP_APPLY_STATUS	CHAR	2	OK if applied or some other code signifying why the exceptions was not applied. See the table of apply status codes below.
DAP_CREATE_DATE	DATE		Date the exception was created
DAP_CREATE_WHO	CHAR	10	ID of user who created the exception
DAP_CREATE_ID	CHAR	10	ID of user who created the exception
DAP_USER_LAST	CHAR	4	User-class of the user who last modified the exception
DAP_MOD_DATE	DATE		Date the exception was last modified
DAP_WHO	CHAR	10	ID of user who last modified the exception
DAP_MOD_ID	CHAR	10	ID of user who last modified the exception
DAP_WHAT	CHAR	8	Name of routine that modified the exception. Usually DAP44
DAP_TIMESTAMP	DATE		Date the exception was last modified.
DAP_EXC_NUM	NUMBER	4	Sequence number for the exceptions added for this student.

DAP_APPLY_STATUS

Status	Description
OK	Applying to requirement
UN	Unhooked – caused by a scribe change; location of requirement could not be determined
BK	Block was not found in the audit - change of major maybe?
CR	Requirement is not a course rule – exception and requirement no longer match up
CO	The course to be substituted was not found on the requirement
IF	IF-statement was resolved and the rule where the exception was to apply is not being used
ND	Node-id not found in block - changes to rules maybe? Should not occur if you have label tags in place
PA	Rule is a plus-list but Also Allow exceptions are not allowed on these types of rules

PN	Rule is a plus-list and the course is not on the rule so the Also Allow or Apply Here exception cannot be used
R1	Not enforced but we don't know why; this should never happen; this signifies a coding problem perhaps
R2	Not enforced and an unknown error code was found; this should never happen; this signifies a coding problem perhaps

DAP_EXC_BUFFER

The dap_exc_buffer field has data at different offsets based on the exception type. The first 23 bytes are not used.

Apply Here

Field	Offset	Length
Discipline	24	12
Course Number	36	12

Also Allow

Field	Offset	Length
Discipline	24	12
Course Number	36	12

Substitution (aka Replace Requirement)

Field	Offset	Length
Old Discipline	24	12
Old Number	36	12
New Discipline	48	12
New Number	60	12

Not Needed / Change the Limit

Field	Offset	Length
Discipline	24	12
Course Number	36	12
Classes/Credits	48	7
Type (CR or CL)	55	2

DAP_EXC_REMARK

For the Apply Here, Also Allow and Substitute exceptions there might be WITH data in the dap_exc_remark field also:

Field	Offset	Length
"WITH:"	1	5

With Code	6	12
With Operator	18	2
With Value	20	30

Notes

Academic advising notes are added to student records via the Notes or Petitions tabs. Both types of notes are saved to the dap_note_dtl and dap_note_txt_dtl.

DAP_NOTE_DTL

Field	Data type	Length	Description
DAP_STU_ID	CHAR	10	Student ID
DAP_SCHOOL	CHAR	12	Valid in UCX-STU350. Example: UG. Notes may be tied to the school via the UCX-CFG020 WEB Notes tied to School flag.
DAP_DEGREE	CHAR	12	Valid in UCX-STU307. Example: BS. Notes may be tied to the degree via the UCX-CFG020 WEB Notes tied to Degree flag.
DAP_NOTE_TYPE	CHAR	2	Valid in UCX-SCR008. Petitions have a type of PE and normal notes have some other value. For normal notes, a flag on the SCR008 record indicates that this is an internal note.
DAP_NOTE_STATUS	CHAR	2	Valid in UCX-SCR009. Normal notes have a status of OK while petitions can have several different values because of the approval process.
DAP_EXC_NUM	NUMBER	4	Obsolete
DAP_CREATE_DATE	DATE		Date the note was created
DAP_CREATE_WHO	CHAR	10	ID of user who created the note
DAP_CREATE_ID	CHAR	10	ID of user who created the note
DAP_USER_LAST	CHAR	4	User-class of the user who last modified the note
DAP_MOD_DATE	DATE		Date the note was last modified
DAP_WHO	CHAR	10	ID of user who last modified the note
DAP_MOD_ID	CHAR	10	ID of user who last modified the note
DAP_WHAT	CHAR	8	Name of routine that modified the note. Usually DAP44
DAP_TIMESTAMP	DATE		Date the note was last modified.
DAP_NOTE_NUM	NUMBER	4	Sequence number for the notes added for this student. Together with the dap_stu_id this field is used to find the child dap_note_txt_dtl records.

DAP_NOTE_TXT_DTL

Field	Data type	Length	Description
DAP_STU_ID	CHAR	10	Student ID
DAP_NOTE_TEXT	CHAR	72	The note text. The complete note text is broken up into 72 byte chunks and saved on separate records. No carriage-return or newline characters are saved here.
DAP_NOTE_NUM	NUMBER	4	The note number corresponding to the dap_note_dtl.dap_note_num.
DAP_NOTE_SEQ	NUMBER	4	The sequence of this text record for the overall note.